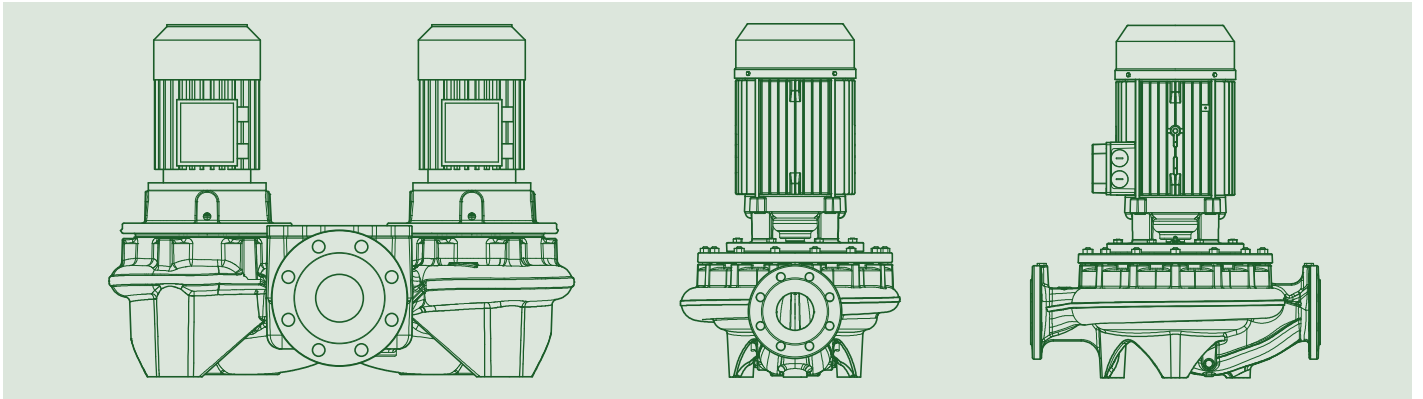


# IN-LINE PUMPS



**TECHNICAL  
CATALOGUE**



www.csq.it



IONet  
www.ionet.it

**CERTIFICATO N. 9101.COGE**  
**CERTIFICATE N. 9101.COGE**

SI CERTIFICA CHE IL SISTEMA DI GESTIONE PER LA QUALITÀ DI  
WE HEREBY CERTIFY THAT THE QUALITY MANAGEMENT SYSTEM OPERATED BY

**DWT HOLDING SPA**  
VIA MARCO POLO 14 - 35035 MESTRINO (PD)

UNITÀ OPERATIVE / OPERATIVE UNITS:

Vedere gli Allegati per le Unità Operative (n° 8 pagine)  
View the Annexes for the Operative Units (n° 8 pages)

E' CONFORME ALLA NORMA / IS IN COMPLIANCE WITH THE STANDARD  
**ISO 9001:2015**

PER LE SEGUENTI ATTIVITÀ / FOR THE FOLLOWING ACTIVITIES

Progettazione, produzione, commercializzazione e assistenza di pompe, elettropompe, gruppi di pompaggio e sistemi elettronici di controllo per acque fredde, calde ad uso civile, industriale ed agricolo e relativi componenti ed accessori  
Design, production, sale and assistance of pumps, electric pumps, pumping units and electronic control systems for cold and hot water, for residential, industrial and agriculture use including components and accessories

Ulteriori informazioni riguardanti l'applicabilità di ISO 9001:2015 possono essere ottenute consultando l'organizzazione. Further consultation regarding the applicability of ISO 9001:2015 requirements may be obtained by consulting the organization.

DATE	PRIMA CERTIFICAZIONE FIRST CERTIFICATION	ESIBIZIONE CORRENTE CURRENT ISSUE	SCADENZA EXPIRES
	1995-07-17	2021-05-11	2024-05-27



880 S.p.A. - VIA GIUSTIZIANO, 43 - 20138 MILANO ITALY  
Management System Division - Fazio Orzari



ISO 9001:2015



IAF: 18, 19, 28



www.csq.it



www.csq.it



IONet  
www.ionet.it

**ALLEGATO N. 9101.COGE-1**  
**ANNEX N.**

**DWT HOLDING SPA**  
VIA MARCO POLO 14 - 35035 MESTRINO (PD)  
**DAB PUMPS SPA**  
VIA MARCO POLO 14 - 35035 MESTRINO (PD)

Attività:  
Activities:

Progettazione, produzione, commercializzazione e assistenza di pompe, elettropompe, gruppi di pompaggio e sistemi elettronici di controllo per acque fredde, calde ad uso civile, industriale ed agricolo e relativi componenti ed accessori  
Design, production, sale and assistance of pumps, electric pumps, pumping units and electronic control systems for cold and hot water, for residential, industrial and agriculture use including components and accessories

IL PRESENTE ALLEGATO HA LO SCOPO DI SPECIFICARE LE ATTIVITÀ SVOLTE PRESSO LA SINGOLA  
SITUAZIONE OPERATIVA NELL'AMBITO DELLA CERTIFICAZIONE DEL SISTEMA DI GESTIONE  
REALIZZATA A DWT HOLDING SPA  
THE AIM OF PRESENT ANNEX IS TO EXPLAIN THE ACTIVITIES PERFORMED IN EACH OPERATIVE UNIT  
OF THE MANAGEMENT SYSTEM CERTIFICATION ISSUED TO DWT HOLDING SPA

PER LA UNITÀ RIFERITA AL CERTIFICATO N. 9101.COGE  
FOR THE UNIT REFERRED TO CERTIFICATE N. 9101.COGE

DATE	PRIMA CERTIFICAZIONE FIRST CERTIFICATION	ESIBIZIONE CORRENTE CURRENT ISSUE	SCADENZA EXPIRES
	1995-07-17	2021-05-11	2024-05-27



880 S.p.A. - VIA GIUSTIZIANO, 43 - 20138 MILANO ITALY  
Management System Division - Fazio Orzari



ISO 9001:2015



IAF: 18, 19, 28



www.csq.it



**SCAN HERE**  
For more information.

# CM2, CM2-G, CP2, CP2-G / DCM2, DCM2-G / DCP2, DCP2-G

IN-LINE PUMPS



## TECHNICAL DATA

**Operating range:** up to 105 m<sup>3</sup>/h

**Head:** up to 110 m

**Type of pumped liquid:** clean, free of solids and abrasives, non-viscous, non-aggressive, non-crystallised and chemically neutral, with properties similar to water

**Glycol percentage (maximum):** 50%

**Liquid temperature range:** from -15 °C to +140 °C

**Maximum ambient temperature:** +50 °C

**Maximum operating pressure:** 1600 kPa / 16 bar

**Flanging or threading:** flanging PN 10/PN16

**Motor efficiency:** IE2 up to 0,55 kW; IE3 ≥ 0,75 kW

**Motor protection class:** IP 55

**Motor insulation class:** F

**Impeller material:** cast iron or technopolymer

**Three phase power input:** 3x230 V 50 Hz / 3x400 V 50 Hz

**Max rpm:** 2910 rpm

**Type of installation:** Fixed in horizontal or vertical position with motor in up position. Only in vertical position for motor from 7,5 kW.

In-line pumps for use in commercial building service, designed for the recirculation of water in air conditioning and heating systems even in the presence of solar collectors. Available in twin version (models with letter D).

## CONSTRUCTION FEATURES OF THE PUMP

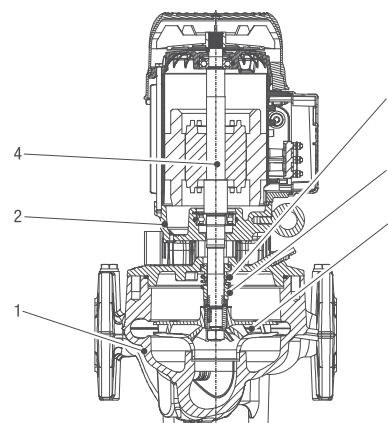
Suction and delivery ports in line and flanged PN 10 or PN 16 with threaded connectors for control pressure gauges. Pump body and motor support in cast iron. Impeller in cast iron or technopolymer depending on the model. Standard mechanical seal according to DIN 24960 in silicon carbide / silicon carbide.

## CONSTRUCTION FEATURES OF THE MOTOR

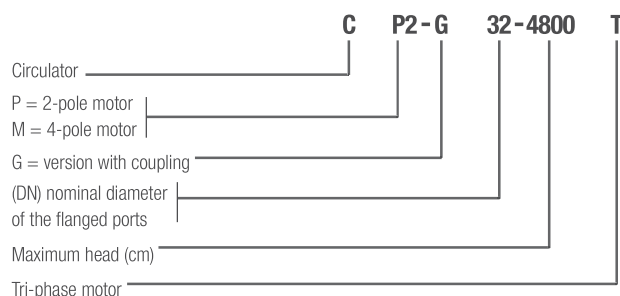
Air-cooled three-phase asynchronous motor with two or four poles. Motor shaft in AISI 316 stainless steel. Electrical protection by the user.

## MATERIALS

N.	PARTS	MATERIALS
1	PUMP BODY	CAST IRON EN G.JL250 UNI EN 1561
2	SUPPORT	CAST IRON EN G.JL250 UNI EN 1561
3	IMPELLER	CAST IRON EN G.JL200 UNI EN 1561 AND ULTRASON E 2010
4	SHAFT WITH ROTOR	AISI 316
5	MECHANICAL SEAL	SPRING AISI 316 - SIC / SIC - EPDM
6	O-RING	EPDM



## Denominations: (example)



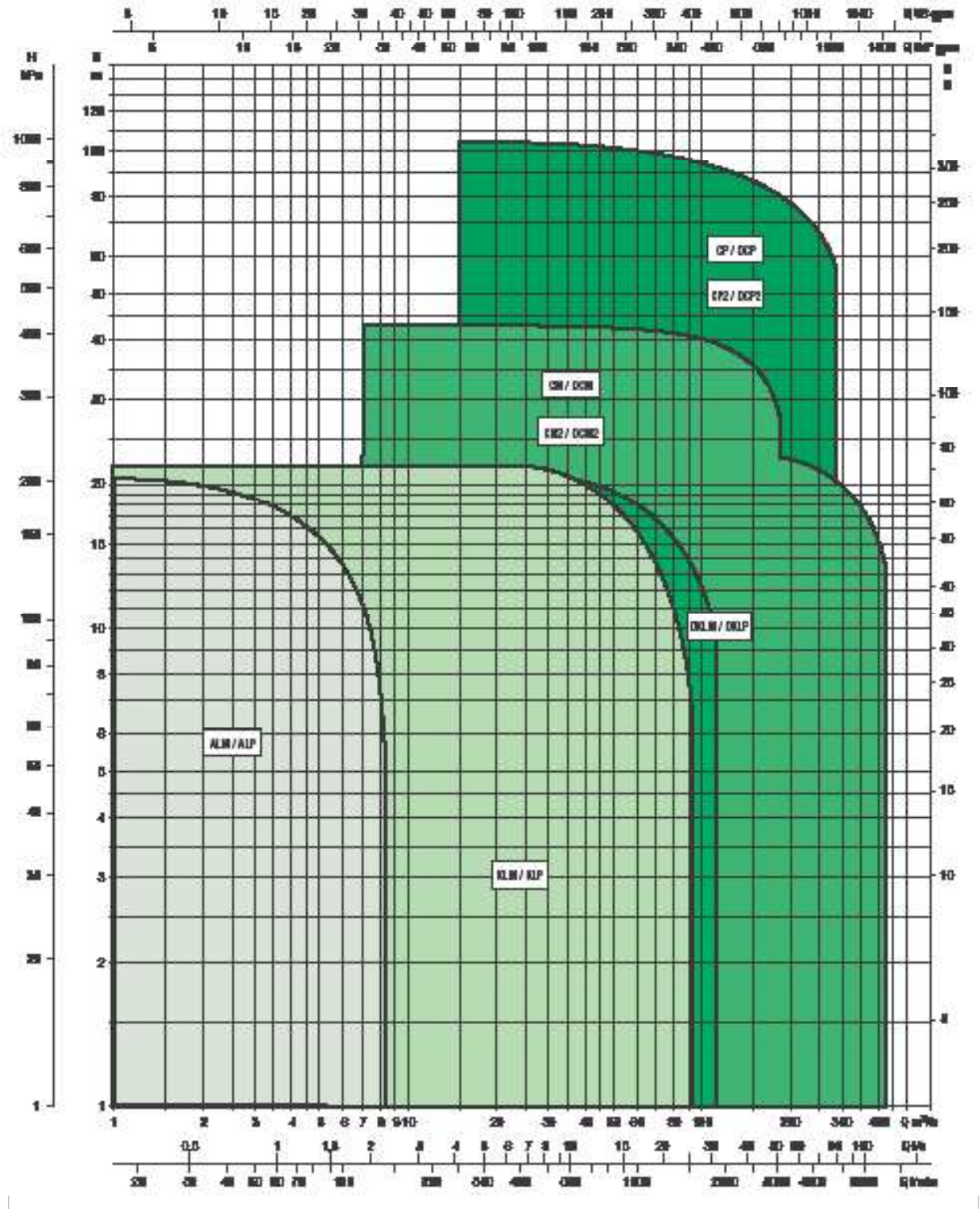
# IN-LINE PUMPS

FOR CIRCULATION SYSTEMS

## PERFORMANCE RANGE

The performance curves are based on kinematic viscosity values = 1 mm<sup>2</sup>/s and density equal to 1000 kg/m<sup>3</sup>. Curve tolerance according to ISO 9906.

### GRAPHIC SELECTION TABLE



# CM2, CM2-G, CP2, CP2-G / DCM2, DCM2-G / DCP2, DCP2-G

IN-LINE PUMPS

## SELECTION TABLE - CM2

MODEL	HYDRAULIC DATA				
	Q=m <sup>3</sup> /h	0	5	10	15
	Q=l/min	0	83	167	250
CM2 32-450 T	H (mt)	4,7	4,3	3,2	1,5
CM2 32-600 T		6,0	5,6	4,4	2,4
CM2 32-800 T		7,8	7,6	6,5	4,9
CM2 32-1200 T		10,9	10,6	9,4	7,4

## SELECTION TABLE - CP2

MODEL	HYDRAULIC DATA						
	Q=m <sup>3</sup> /h	0	10	15	20	30	35
	Q=l/min	0	167	250	333	500	583
CP2 32-550 T	H (mt)	5,5	3,9	2,2			
CP2 32-750 T		7,4	5,6	3,9			
CP2 32-1100 T		10,6	8,7	7,0	4,5		
CP2 32-1400 T		14,2	12,3	10,5	8,2		
CP2 32-1800 T		17,7	16,0	14,3	11,9	5,2	
CP2 32-2100 T		22,9	16,8	9,6			
CP2 32 2200 T		21,9	20,3	18,3	15,7	8,4	
CP2 32-2700 T		26,8	25,5	23,7	21,3	15,0	
CP2 32-3600 T		36,4	35,5	33,5	31,0	24,8	
CP2 32-4000 T		40,3	39,4	37,4	34,9	28,4	24,5
CP2-G 32-4800 T		48,7	48,1	46,5	44,2	37,9	33,8

## SELECTION TABLE - DCM2

MODEL	HYDRAULIC DATA				
	Q=m <sup>3</sup> /h	0	5	10	15
	Q=l/min	0	83	167	250
DCM2 32-450 T	H (mt)	4,7	4,2	2,7	
DCM2 32-600 T		6,0	5,6	4,3	1,9
DCM2 32-800 T		8,0	7,6	6,5	4,6
DCM2 32-1200 T		11,1	10,5	9,4	7,2

## SELECTION TABLE - DCP2

MODEL	HYDRAULIC DATA						
	Q=m <sup>3</sup> /h	0	10	15	20	30	35
	Q=l/min	0	167	250	333	500	583
DCP2 32-550 T	H (mt)	5,5	3,4	0,8			
DCP2 32-750 T		7,4	5,2	2,8			
DCP2 32-1100 T		10,9	8,4	6,1	2,6		
DCP2 32-1400 T		14,4	12,1	9,8	6,5		
DCP2 32-1800 T		17,7	15,6	13,2			
DCP2 32-2100 T		23,0	16,6	8,9			
DCP2 32-2200 T		22,1	20,1	17,4	13,7	6,3	
DCP2 32-2700 T		27,2	25,3	23,3	20,5	12,2	
DCP2 32-3600 T		36,9	35,0	33,1	30,4	22,6	
DCP2 32-4000 T		40,9	39,1	37,0	34,1	25,9	21,0
DCP2-G 32-4800 T		49,4	47,8	46,2	43,7	34,9	28,9

# CM2, CM2-G, CP2, CP2-G / DCM2, DCM2-G / DCP2, DCP2-G

IN-LINE PUMPS

IN-LINE PUMPS

## SELECTION TABLE - CM2

MODEL	HYDRAULIC DATA					
	Q=m <sup>3</sup> /h	0	10	20	25	30
	Q=l/min	0	167	333	417	500
CM2 40-450 T	H (m)	4,6	4,1	2,0		
CM2 40-650 T		6,4	6,0	4,1	2,5	
CM2 40-850 T		8,5	7,9	5,9	4,3	
CM2 40-1000 T		9,7	9,7	7,9	6,2	4,1
CM2 40-1200 T		11,9	12,0	11,0	10,2	9,1
CM2 40-1450 T		14,5	14,4	13,2	12,3	11,0
CM2 40-1650 T		16,7	16,4	15,1	14,0	12,7
CM2 40-2050 T		20,5	20,2	18,4	16,9	15,0

## SELECTION TABLE - CP2

MODEL	HYDRAULIC DATA								
	Q=m <sup>3</sup> /h	0	10	15	20	30	40	50	70
	Q=l/min	0	167	250	333	500	667	833	1167
CP2 40-600 T	H (m)	6,1	4,4	2,5					
CP2 40-1000 T		10,2	8,7	6,7	3,7				
CP2 40-1300 T		13,2	11,6	9,7	7,1				
CP2 40-1900 T		19,0	19,0	18,4	17,5	14,7	10,5		
CP2 40-2200 T		22,5	22,5	21,9	20,9	18,0	14,0		
CP2 40-2800 T		27,6	27,8	27,2	26,3	23,5	19,8		
CP2 40-3300 T		33,1	33,5	32,9	32,0	29,2	25,3		
CP2-G 40-4000 T		38,5	39,0	38,9	38,3	35,7	30,9		
CP2-G 40-5000 T		48,8	49,2	49,0	48,6	46,9	44,3		
CP2-G 40-6600 T		66,2	66,4	66,1	65,6	63,6	60,5		
CP2-G 40-8200 T		82,0	82,1	81,8	81,2	78,9	74,9	69,1	52,9

## SELECTION TABLE - DCM2

MODEL	HYDRAULIC DATA					
	Q=m <sup>3</sup> /h	0	10	20	25	30
	Q=l/min	0	167	333	417	500
DCM2 40-450 T	H (m)	4,6	3,9	1,1		
DCM2 40-650 T		6,4	5,8	3,2	0,8	
DCM2 40-850 T		8,3	7,7	5,0	2,9	
DCM2 40-1000 T		9,6	9,4	7,2	5,2	2,8
DCM2 40-1200 T		12,5	12,1	10,6	9,2	7,3
DCM2 40-1450 T		14,9	14,5	12,9	11,5	9,5
DCM2 40-1650 T		16,9	16,6	14,8	13,2	11,1
DCM2 40-2050 T		20,7	20,2	18,1	16,2	13,6

## SELECTION TABLE - DCP2

MODEL	HYDRAULIC DATA								
	Q=m <sup>3</sup> /h	0	10	15	20	30	40	50	70
	Q=l/min	0	167	250	333	500	667	833	1167
DCP2 40-600 T	H (m)	6,0	3,9	1,4					
DCP2 40-1000 T		10,3	8,5	5,6	1,8				
DCP2 40-1300 T		13,1	11,3	8,8	5,0				
DCP2 40-1900 T		19,1	19,2	18,7	17,7	14,4	9,3		
DCP2 40-2200 T		22,4	22,6	22,1	21,2	17,8	12,5		
DCP2 40-2800 T		27,7	28,2	27,9	27,1	24,1	19,2		
DCP2 40-3300 T		33,4	33,9	33,5	32,8	29,9	25,2		
DCP2-G 40-4000 T		39,2	39,5	39,4	38,9	36,3	31,1		
DCP2-G 40-5000 T		49,3	49,4	49,0	48,4	45,9	41,7		
DCP2-G 40-6600 T		67,9	67,6	67,0	66,2	63,3	58,7		
DCP2-G 40-8200 T		83,4	84,3	83,8	82,7	79,2	74,1	67,4	46,1

# CM2, CM2-G, CP2, CP2-G / DCM2, DCM2-G / DCP2, DCP2-G

IN-LINE PUMPS

## SELECTION TABLE - CM2

MODEL	HYDRAULIC DATA							
	Q=m <sup>3</sup> /h	0	10	20	30	35	40	50
	Q=l/min	0	167	333	417	500	667	833
CM2 50-400 T	H (m)	3,9	3,7	2,7	1,0			
CM2 50-530 T		5,3	5,2	4,3	2,6	1,4		
CM2 50-670 T		6,7	6,3	5,2	3,4	2,1		
CM2 50-850 T		8,5	8,3	7,1	5,2	3,9		
CM2 50-1000 T		10,5	10,4	9,5	7,4	6,0	4,4	
CM2 50-1300 T		13,1	13,1	12,5	11,1	10,2	9,1	
CM2 50-1700 T		16,8	16,8	16,1	14,7	13,7	12,6	9,8
CM2-G 50-2200 T		22,1	22,0	21,4	20,1	19,2	18,0	15,2
CM2-G 50-2700 T		27,2	26,8	25,7	23,8	22,5	20,9	17,0

## SELECTION TABLE - CP2

MODEL	HYDRAULIC DATA									
	Q=m <sup>3</sup> /h	0	10	20	30	40	50	60	70	105
	Q=l/min	0	167	250	333	500	667	833	1167	1750
CP2 50-600 T	H (m)	6,1	5,2	3,7	1,8					
CP2 50-800 T		8,0	7,5	5,9	3,9					
CP2 50-1100 T		11,4	11,0	9,9	8,0	5,6				
CP2 50-1400 T		14,4	14,3	13,5	12,0	9,8	6,7	2,7		
CP2 50-1800 T		17,7	18,0	17,2	15,8	13,7	10,8	6,8		
CP2 50-2100 T		21,4	21,8	21,4	20,1	18,1	15,3	11,6	6,8	
CP2 50-2800 T		27,9	27,6	26,6	24,9	22,4	19,1	15,2	10,5	
CP2-G 50-3300 T		33,8	33,9	33,0	31,2	28,6	25,2	21,1	16,1	
CP2-G 50-4400 T		43,7	44,0	43,2	41,5	38,8	35,1	30,5	25,0	
CP2-G 50-5200 T		52,0	53,2	52,9	51,7	49,8	47,3	44,2	40,6	
CP2-G 50-6600 T		65,5	67,2	66,8	65,2	62,9	60,3	57,6	54,5	
CP2-G 50-9000 T		88,8	90,9	90,6	89,0	86,8	84,4	81,9	79,1	
CP2-G 50-11100 T		110,8	112,2	111,5	109,5	106,9	104,1	101,1	97,6	71,1

IN-LINE PUMPS

# CM2, CM2-G, CP2, CP2-G / DCM2, DCM2-G / DCP2, DCP2-G

IN-LINE PUMPS

## SELECTION TABLE - DCM2

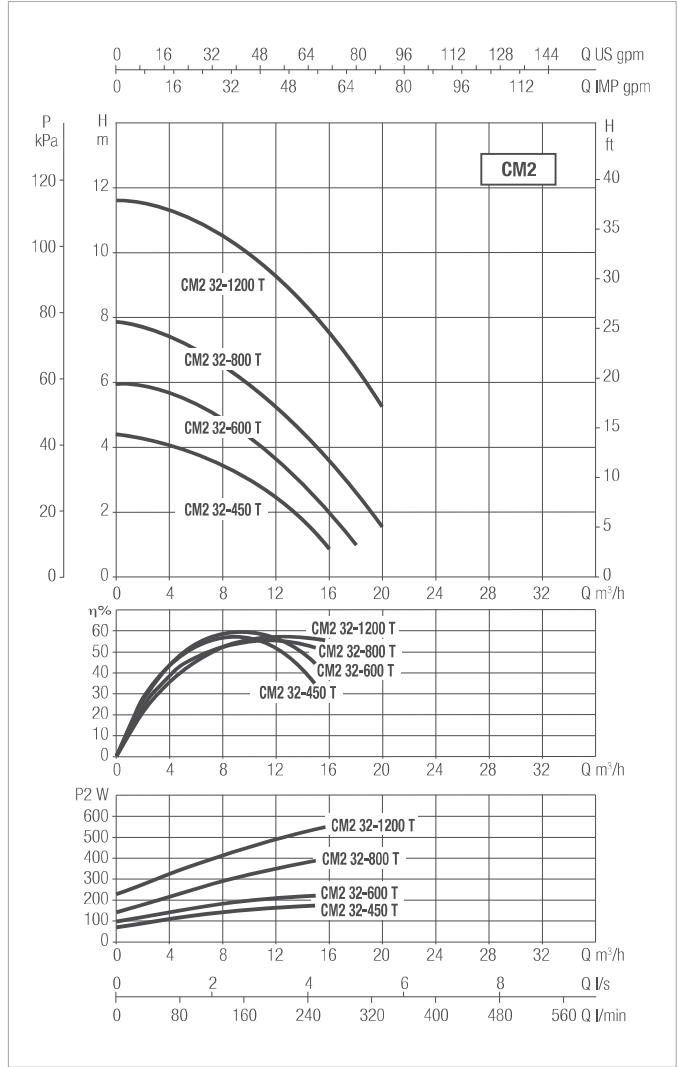
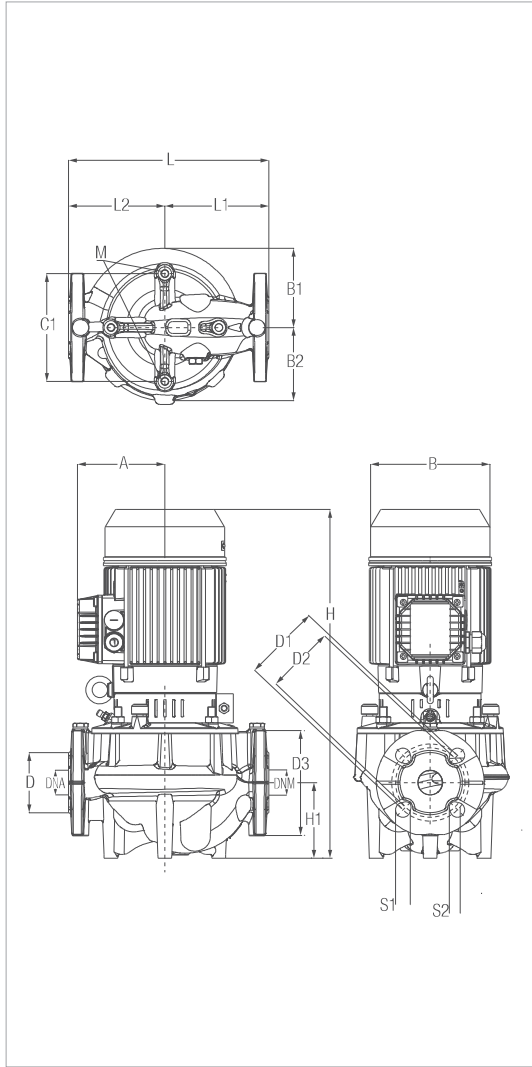
MODEL	HYDRAULIC DATA							
	Q=m <sup>3</sup> /h	0	10	20	30	35	40	50
	Q=l/min	0	167	333	417	500	667	833
DCM2 50-400 T	H (m)	4,1	3,7	2,6	0,4			
DCM2 50-530 T		5,5	5,3	4,3	2,4	1,0		
DCM2 50-670 T		6,8	6,3	5,0	2,7	0,9		
DCM2 50-850 T		8,6	8,3	7,0	4,6	2,9		
DCM2 50-1000 T		10,7	10,5	9,3	6,9	5,2	3,3	
DCM2 50-1300 T		13,2	13,2	12,4	10,7	9,5	8,2	4,7
DCM2 50-1700 T		17,0	16,9	16,0	14,3	13,1	11,7	8,1
DCM2-G 50-2200 T		22,5	22,5	21,7	20,1	19,0	17,6	14,3
DCM2-G 50-2700 T		27,7	27,3	26,3	24,4	23,0	21,3	17,1

## SELECTION TABLE - DCP2

MODEL	HYDRAULIC DATA									
	Q=m <sup>3</sup> /h	0	10	20	30	40	50	60	70	105
	Q=l/min	0	167	250	333	500	667	833	1167	1750
DCP2 50-600 T	H (m)	6,3	5,3	3,5	1,4					
DCP2 50-800 T		8,4	7,6	5,8	3,5					
DCP2 50-1100 T		12,1	11,4	10,1	7,9	4,9				
DCP2 50-1400 T		15,0	14,8	13,7	11,7	9,0	5,3	0,7		
DCP2 50-1800 T		18,5	18,6	17,5	15,6	13,0	9,5	4,8		
DCP2 50-2100 T		22,1	22,4	21,7	20,1	17,8	14,6	10,5	5,2	
DCP2 50-2800 T		28,6	28,1	26,9	24,8	21,7	17,6	12,5	6,7	
DCP2-G 50-3300 T		34,6	34,5	33,5	31,5	28,4	24,3	19,2	12,9	
DCP2-G 50-4400 T		44,3	44,5	43,7	41,9	38,8	34,5	29,0	22,5	
DCP2-G 50-5200 T		53,3	54,1	53,7	52,4	50,1	47,1	43,3	38,8	
DCP2-G 50-6600 T		67,2	68,8	68,4	66,8	64,4	61,5	58,2	54,4	
DCP2-G 50-9000 T		89,1	92,2	91,9	89,7	86,8	83,7	80,8	77,8	
DCP2-G 50-11100 T		109,5	112,6	111,6	108,6	104,9	101,2	97,8	94,2	62,4

# CM2 - IN-LINE PUMPS

Liquid temperature range: from -15°C to +140°C - Maximum operating pressure: 16 bar (1600 kPa)



The performance curves are based on kinematic viscosity values = 1 mm<sup>2</sup>/s and density equal to 1000 kg/m<sup>3</sup>. Curve tolerance according to ISO 9906.

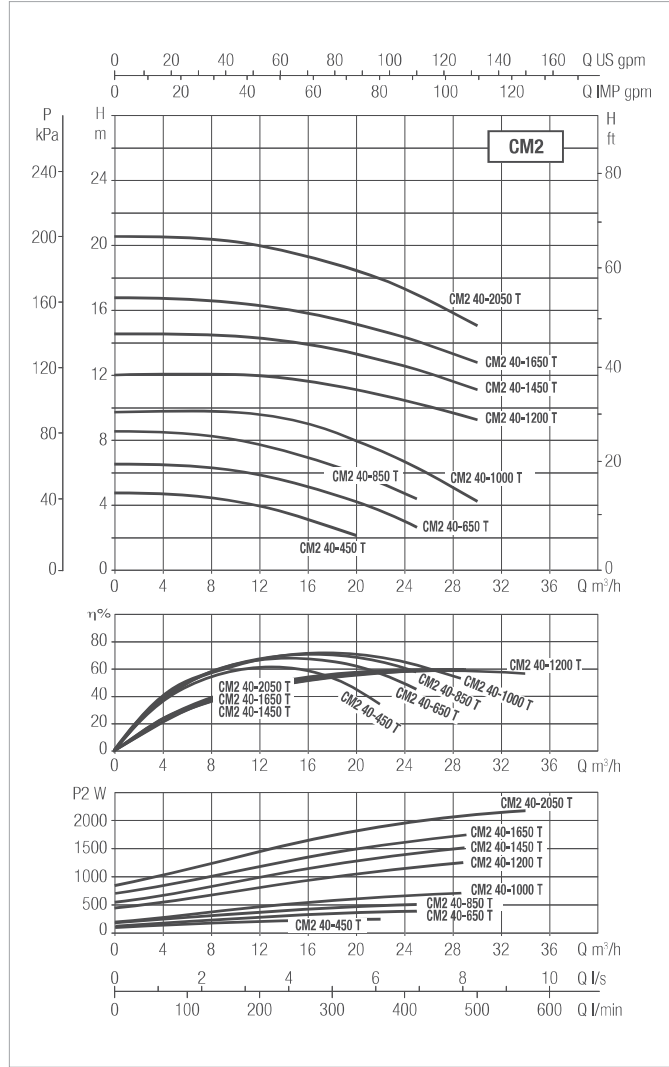
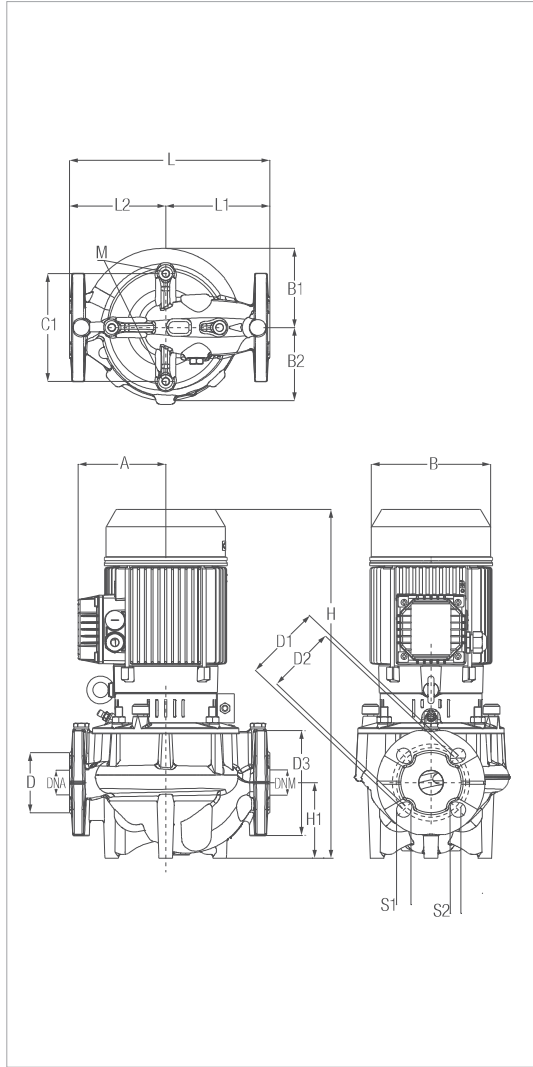
MODEL	ELECTRICAL DATA							
	CENTRE DISTANCE	PUMP CONNECTIONS	POWER INPUT 50 HZ	P1 MAX [kW]	P2 NOMINAL		In [A]	
					kW	HP	230	400
CM2 32-450 T	260	DN 32 PN 16 DN 32 PN 10	230-400V	0,26	0,25	0,34	1,2 A	0,7 A
CM2 32-600 T				0,33	0,25	0,34	1,3 A	0,8 A
CM2 32-800 T	320			0,51	0,37	0,50	2,0 A	1,2 A
CM2 32-1200 T				0,73	0,55	0,75	2,4 A	1,4 A

MODEL	A	B	B1	B2	C1	D	D1	S1	D2	S2	D3	DNA	DNM	H	H1	L	L1	L2	M	PACKING DIMENSIONS			VOLUME (mc)	WEIGHT Kg
																				L/A	L/B	H		
CM2 32-450 T	110	150	102	95	140	78	100	14	90	19	140	32	33	445	98	260	135	125	10	0,53	0,3	0,46	0,07	21,9
CM2 32-600 T	110	150	102	95	140	78	100	14	90	19	140	32	33	445	98	260	135	125	10	0,53	0,3	0,46	0,07	21,6
CM2 32-800 T	110	150	129	120	180	80	100	14	90	19	140	32	33	459	90	320	165	155	10	0,52	0,29	0,7	0,11	27
CM2 32-1200 T	110	150	129	120	180	80	100	14	90	19	140	32	33	459	90	320	165	155	10	0,52	0,29	0,7	0,11	27

# CM2 - IN-LINE PUMPS

Liquid temperature range: from -15°C to +140°C - Maximum operating pressure: 16 bar (1600 kPa)

IN-LINE PUMPS



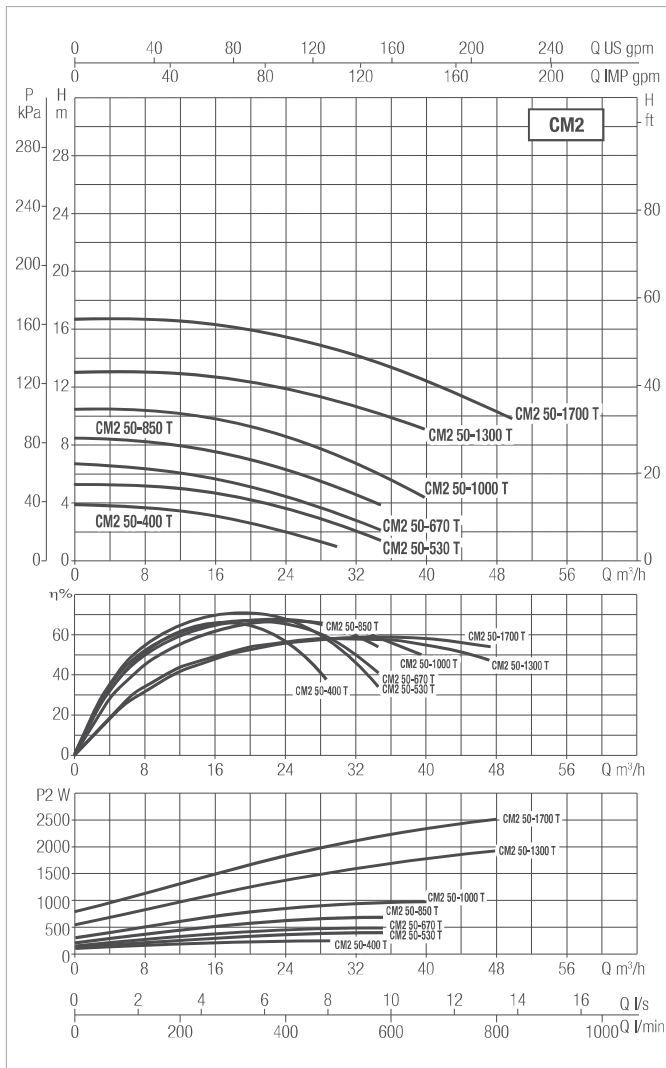
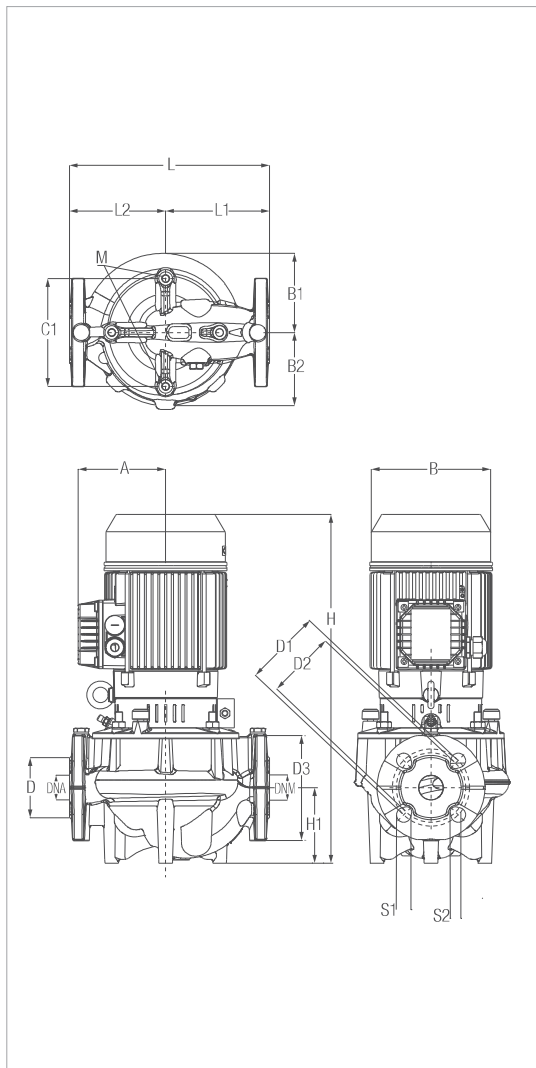
The performance curves are based on kinematic viscosity values = 1 mm<sup>2</sup>/s and density equal to 1000 kg/m<sup>3</sup>. Curve tolerance according to ISO 9906.

MODEL	ELECTRICAL DATA							
	CENTRE DISTANCE	PUMP CONNECTIONS	POWER INPUT 50 HZ	P1 MAX [kW]	P2 NOMINAL		In [A]	
					KW	HP	230	400
CM2 40-450 T	320	DN 40 PN 16 DN 40 PN 10	230-400V	0.26	0.25	0.33	1.3	0.77
CM2 40-650 T				0.51	0.37	0.55	2	1.13
CM2 40-850 T				0.73	0.55	0.75	2.3	1.34
CM2 40-1000 T				0.73	0.55	0.75	3.1	1.79
CM2 40-1200 T				1.68	2.2	3	7.6	4.4
CM2 40-1450 T	440			1.9	2.2	3	8.1	4.7
CM2 40-1650 T				2.23	2.2	3	8.5	4.9
CM2 40-2050 T				2.5	2.2	3	9.2	5.3

MODEL	A	B	B1	B2	C1	D	D1	S1	D2	S2	D3	DNA	DNM	H	H1	L	L1	L2	M	PACKING DIMENSIONS			VOLUME (mc)	WEIGHT Kg
																				L/A	L/B	H		
CM2 40-450 T	110	143	130,6	130,6	180	88	110	20	100	20	150	40	40	440	95	320	168	152	10	0,60	0,30	0,50	0,09	31,70
CM2 40-650 T	110	143	130,6	130,6	180	88	110	20	100	20	150	40	40	455	95	320	168	152	10	0,60	0,30	0,50	0,09	31,70
CM2 40-850 T	110	143	130,6	130,6	180	88	110	20	100	20	150	40	40	455	95	320	168	152	10	0,60	0,30	0,50	0,09	31,70
CM2 40-1000 T	113,5	155	130,6	130,6	180	88	110	20	100	20	150	40	40	448	95	320	168	152	10	0,60	0,30	0,50	0,09	33,20
CM2 40-1200 T	134,5	187	180	180	250	88	110	20	100	20	150	40	40	560,5	99,5	440	220	220	10	0,72	0,60	0,58	0,25	66,00
CM2 40-1450 T	134,5	187	180	180	250	88	110	20	100	20	150	40	40	560,5	99,5	440	220	220	10	0,72	0,60	0,58	0,25	66,00
CM2 40-1650 T	134,5	187	180	180	250	88	110	20	100	20	150	40	40	560,5	99,5	440	220	220	10	0,72	0,60	0,58	0,25	66,00
CM2 40-2050 T	134,5	187	180	180	250	88	110	20	100	20	150	40	40	560,5	99,5	440	220	220	10	0,72	0,60	0,58	0,25	66,00

# CM2 - IN-LINE PUMPS

Liquid temperature range: from -15°C to +140°C - Maximum operating pressure: 16 bar (1600 kPa)



The performance curves are based on kinematic viscosity values = 1 mm<sup>2</sup>/s and density equal to 1000 kg/m<sup>3</sup>. Curve tolerance according to ISO 9906.

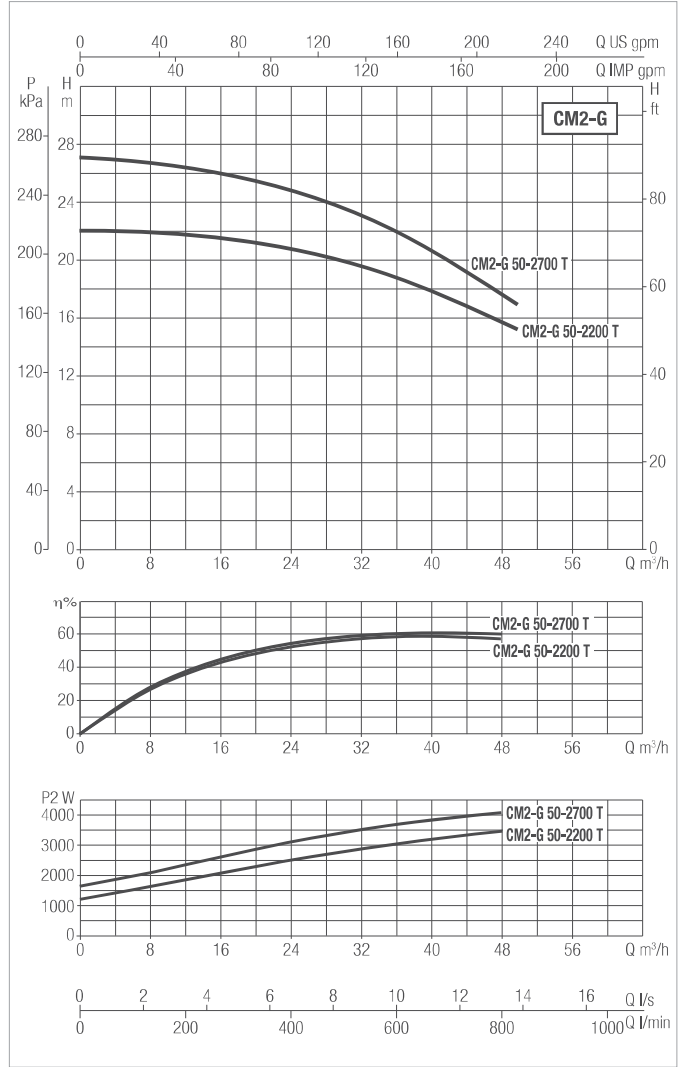
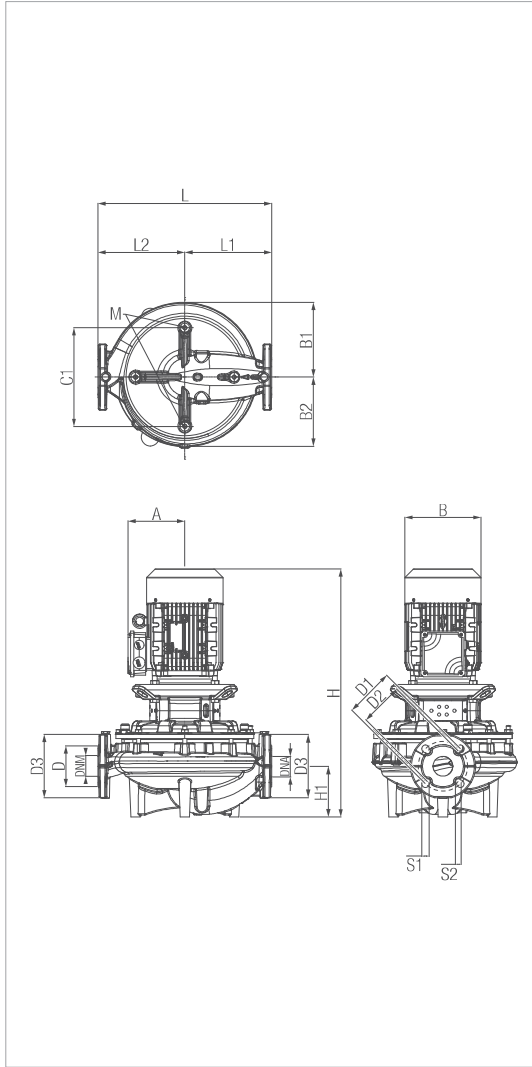
MODEL	ELECTRICAL DATA							
	CENTRE DISTANCE	PUMP CONNECTIONS	POWER INPUT 50 HZ	P1 MAX [kW]	P2 NOMINAL		In [A]	
					kW	HP	230	400
CM2 50-400 T	280	DN 50 PN 16 DN 50 PN 10	230-400V	0.36	0.25	0.33	1.4	0.8
CM2 50-530 T				0.52	0.55	0.75	2.1	1.2
CM2 50-670 T				0.64	0.55	0.75	2.3	1.3
CM2 50-850 T	340			0.87	0.75	1	2.9	1.7
CM2 50-1000 T				1.18	1.1	1.5	6.9	4
CM2 50-1300 T				2.3	2.2	3	8.7	5
CM2 50-1700 T	440	3.18	2.2	3	10.6	6.1		

MODEL	A	B	B1	B2	C1	D	D1	S1	D2	S2	D3	DNA	DNM	H	H1	L	L1	L2	M	PACKING DIMENSIONS			VOLUME (mc)	WEIGHT Kg
																				L/A	L/B	H		
CM2 50-400 T	110	143	112,3	96	100	90	125	23,3	110	18	165	50	50	415	73	280	140	140	10	0,60	0,30	0,50	0,09	28,2
CM2 50-530 T	110	143	112,3	96	100	90	125	23,3	110	18	165	50	50	430,5	73	280	140	140	10	0,60	0,30	0,50	0,09	28,2
CM2 50-670 T	110	143	136,4	131,2	180	100	125	21,8	110	14	165	50	50	483,5	105	340	172,5	167,5	10	0,60	0,30	0,50	0,09	34,5
CM2 50-850 T	118	155	136,4	131,2	180	100	125	21,8	110	14	165	50	50	483,5	105	340	172,5	167,5	10	0,60	0,30	0,50	0,09	36
CM2 50-1000 T	134,5	187	136,4	131,2	180	100	125	21,8	110	14	165	50	50	560	105	340	172,5	167,5	10	0,60	0,30	0,50	0,09	52,6
CM2 50-1300 T	134,5	187	189	180	180	100	125	21,8	110	14	165	50	50	589	128,4	440	220	220	10	0,72	0,60	0,58	0,25	68,9
CM2 50-1700 T	134,5	187	189	180	180	100	125	21,8	110	14	165	50	50	589	128,4	440	220	220	10	0,72	0,60	0,58	0,25	68,9

# CM2-G - IN-LINE PUMPS

Liquid temperature range: from -15°C to +140°C - Maximum operating pressure: 16 bar (1600 kPa)

IN-LINE PUMPS



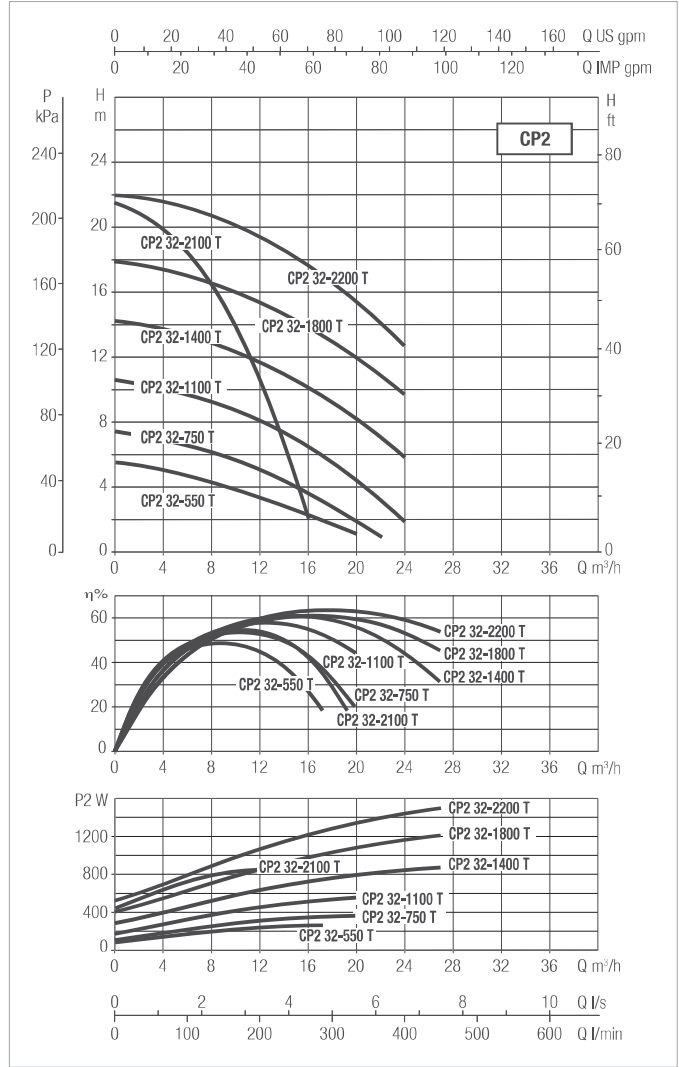
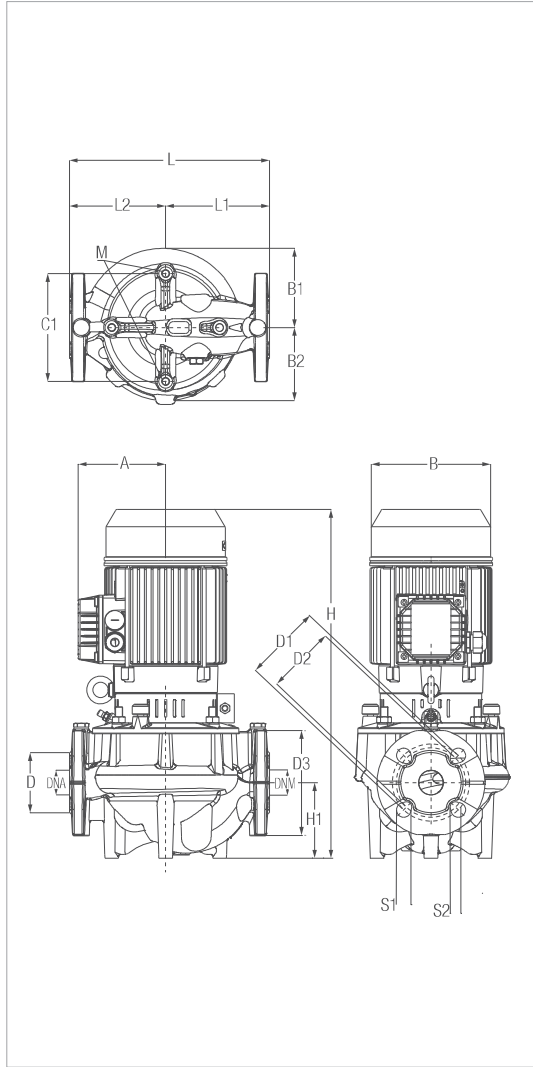
The performance curves are based on kinematic viscosity values = 1 mm<sup>2</sup>/s and density equal to 1000 kg/m<sup>3</sup>. Curve tolerance according to ISO 9906.

MODEL	ELECTRICAL DATA							
	CENTRE DISTANCE	PUMP CONNECTIONS	POWER INPUT 50 HZ	P1 MAX [kW]	P2 NOMINAL		In [A]	
					kW	HP	230	400
CM2-G 50-2200 T	440	DN 50 PN 16 DN 50 PN 10	400-690V	4.4	3	4	7.2	4.2
CM2-G 50-2700 T				4.7	4	5.5	8.3	4.8

MODEL	A	B	B1	B2	C1	D	D1	S1	D2	S2	D3	DNA	DNM	H	H1	L	L1	L2	M	PACKING DIMENSIONS			VOLUME (mc)	WEIGHT Kg
																				L/A	L/B	H		
CM2-G 50-2200 T	144	193	189	180	180	100	125	21,8	110	14	165	50	50	628	128,4	440	220	220	10	0,44	0,37	0,63	0,10	98
CM2-G 50-2700 T	144	193	189	180	180	100	125	21,8	110	14	165	50	50	643	128,4	440	220	220	10	0,44	0,37	0,64	0,10	99,5

# CP2 - IN-LINE PUMPS

Liquid temperature range: from -15°C to +140°C - Maximum operating pressure: 16 bar (1600 kPa)



The performance curves are based on kinematic viscosity values = 1 mm<sup>2</sup>/s and density equal to 1000 kg/m<sup>3</sup>. Curve tolerance according to ISO 9906.

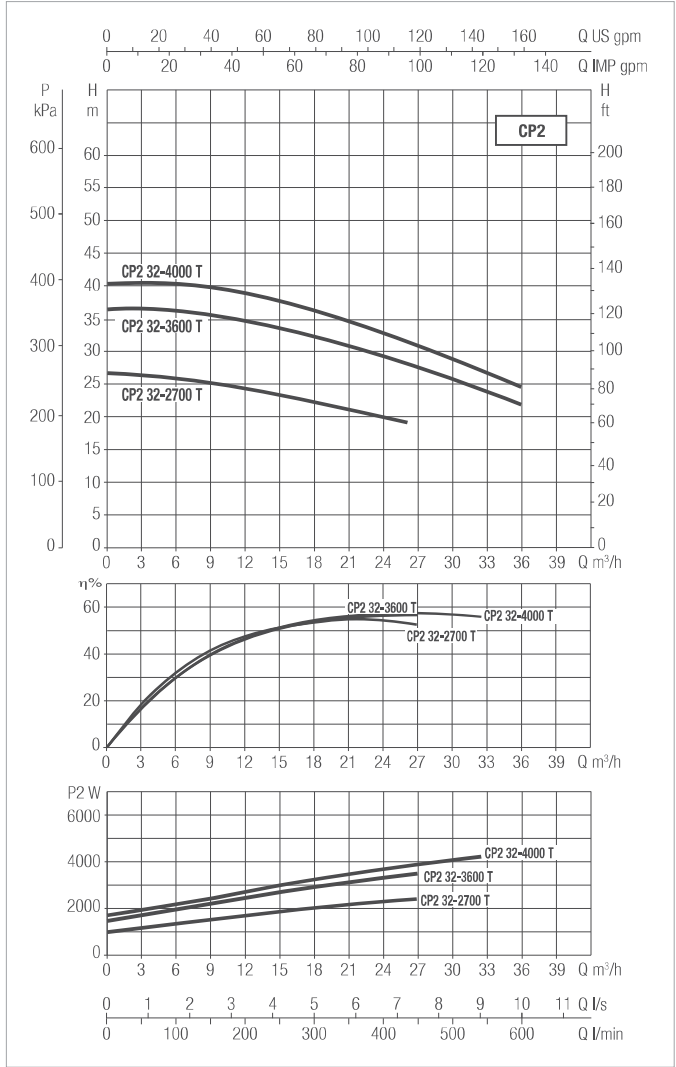
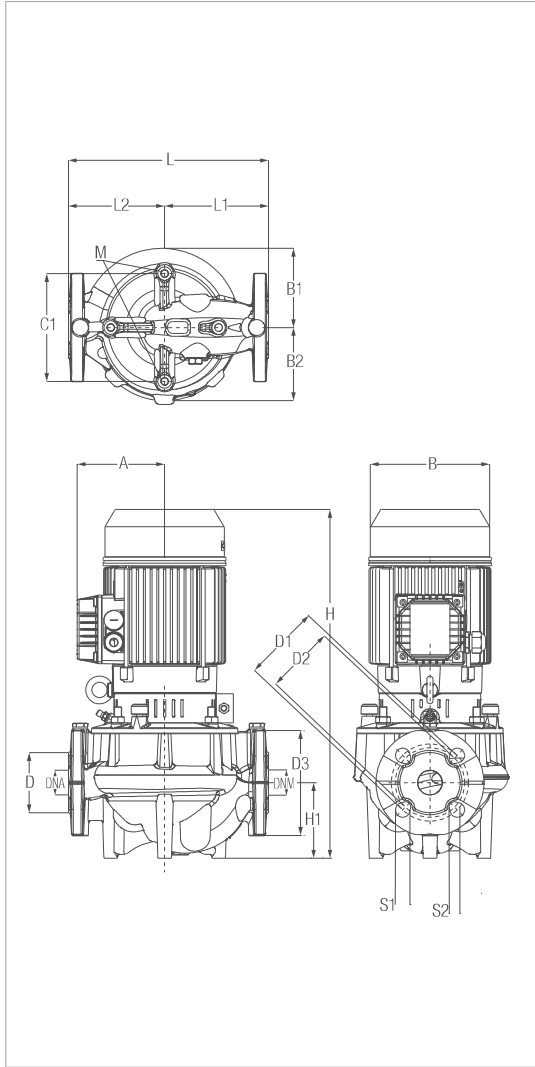
MODEL	ELECTRICAL DATA							
	CENTRE DISTANCE	PUMP CONNECTIONS	POWER INPUT 50 HZ	P1 MAX [kW]	P2 NOMINAL		In [A]	
					kW	HP	230	400
CP2 32-550 T	260	DN 32 PN 16 DN 32 PN 10	230-400V	0,37	0,25	0,34	1,7 A	1 A
CP2 32-750 T				0,48	0,37	0,50	1,9 A	1,1 A
CP2 32-1100 T				0,73	0,55	0,75	2,4 A	1,4 A
CP2 32-1400 T				1,07	0,75	1,02	3,5 A	2 A
CP2 32-1800 T				1,48	1,1	1,50	5,6 A	3,2 A
CP2 32-2100 T				0,85	0,75	1,02	3 A	1,7 A
CP2 32-2200 T				1,83	1,5	2,04	6,3 A	3,6 A

MODEL	A	B	B1	B2	C1	D	D1	S1	D2	S2	D3	DNA	DNM	H	H1	L	L1	L2	M	PACKING DIMENSIONS			VOLUME (mc)	WEIGHT Kg
																				L/A	L/B	H		
CP2 32-550 T	110	150	102	95	140	78	100	14	90	19	140	32	33	445	98	260	135	125	10	0,53	0,3	0,46	0,07	22,6
CP2 32-750 T	110	150	102	95	140	78	100	14	90	19	140	32	33	445	98	260	135	125	10	0,53	0,3	0,46	0,07	22,6
CP2 32-1100 T	110	150	102	95	140	78	100	14	90	19	140	32	33	445	98	260	135	125	10	0,53	0,3	0,46	0,07	22,6
CP2 32-1400 T	110	150	102	95	140	78	100	14	90	19	140	32	33	445	98	260	135	125	10	0,53	0,3	0,46	0,07	24,7
CP2 32-1800 T	110	150	102	95	140	78	100	14	90	19	140	32	33	445	98	260	135	125	10	0,53	0,3	0,46	0,07	25,5
CP2 32-2100 T	113	160	102	95	140	78	100	14	90	19	140	32	33	453	98	260	135	125	10	0,53	0,3	0,46	0,07	25
CP2 32-2200 T	113	160	102	95	140	78	100	14	90	19	140	32	33	453	98	260	135	125	10	0,53	0,3	0,46	0,07	25

# CP2 - IN-LINE PUMPS

Liquid temperature range: from -15°C to +140°C - Maximum operating pressure: 16 bar (1600 kPa)

IN-LINE PUMPS



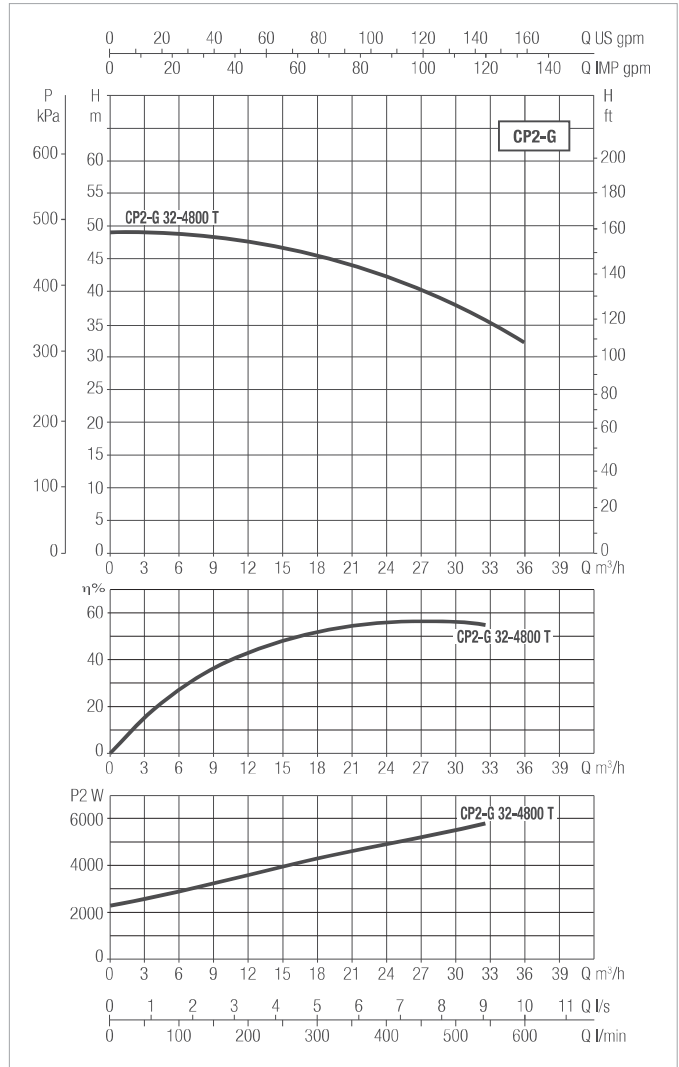
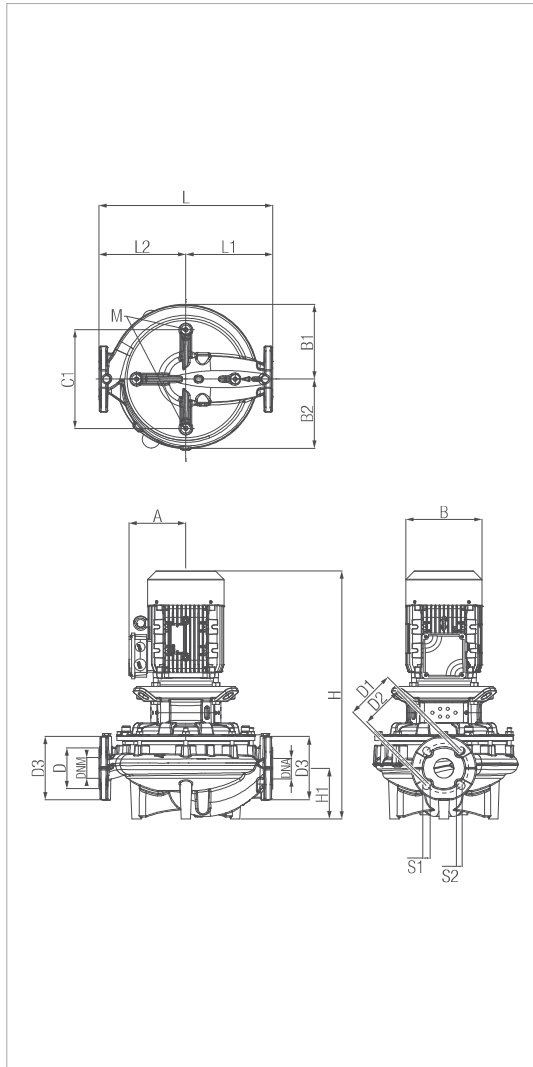
The performance curves are based on kinematic viscosity values = 1 mm<sup>2</sup>/s and density equal to 1000 kg/m<sup>3</sup>. Curve tolerance according to ISO 9906.

MODEL	ELECTRICAL DATA							
	CENTRE DISTANCE	PUMP CONNECTIONS	POWER INPUT 50 HZ	P1 MAX [kW]	P2 NOMINAL		In [A]	
					kW	HP	230	400
CP2 32-2700 T	320	DN 32 PN 16 DN 32 PN 10	230-400V	2,9	2,2	2,99	9 A	5,2 A
CP2 32-3600 T				4,08	3	4,08	12,3 A	7,1 A
CP2 32-4000 T				4,95	4	5,44	15,1	8,7 A

MODEL	A	B	B1	B2	C1	D	D1	S1	D2	S2	D3	DNA	DNM	H	H1	L	L1	L2	M	PACKING DIMENSIONS			VOLUME (mc)	WEIGHT Kg
																				L/A	L/B	H		
CP2 32-2700 T	118	160	102	94	140	80	100	14	90	19	140	32	33	526	90	320	165	155	10	0,52	0,29	0,7	0,11	37
CP2 32-3600 T	135	193	130	125	180	80	100	14	90	19	140	32	33	535	90	320	165	155	10	0,52	0,29	0,7	0,11	45
CP2 32-4000 T	135	193	130	125	180	80	100	14	90	19	140	32	33	535	90	320	165	155	10	0,52	0,29	0,7	0,11	45

## CP2-G - IN-LINE PUMPS

Liquid temperature range: from -15°C to +140°C - Maximum operating pressure: 16 bar (1600 kPa)



The performance curves are based on kinematic viscosity values = 1 mm<sup>2</sup>/s and density equal to 1000 kg/m<sup>3</sup>. Curve tolerance according to ISO 9906.

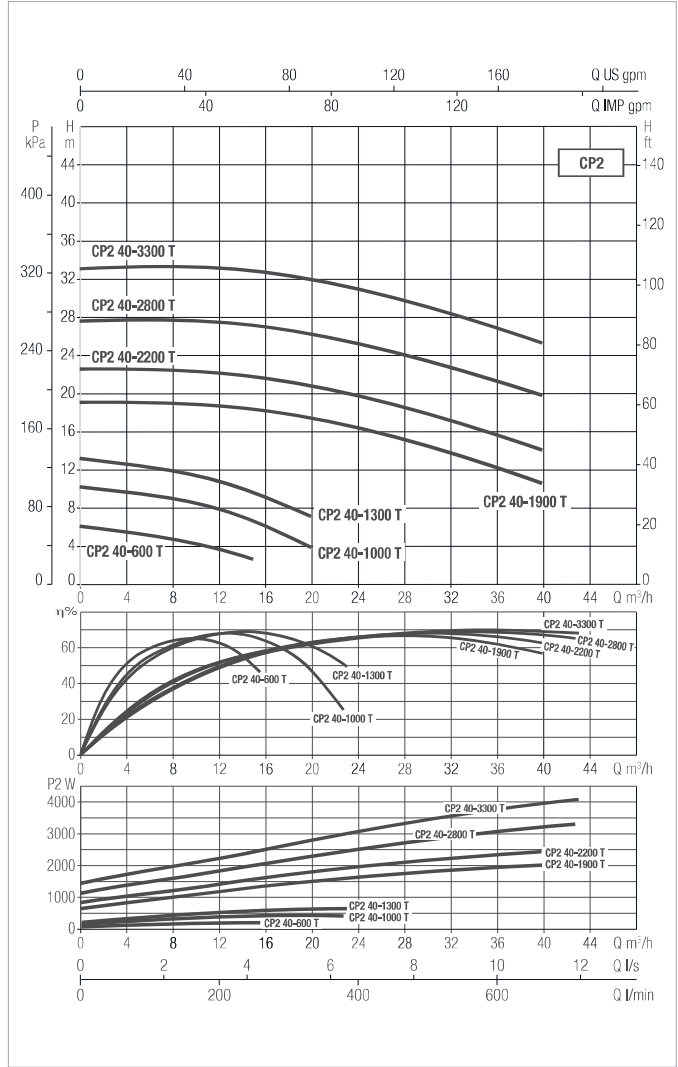
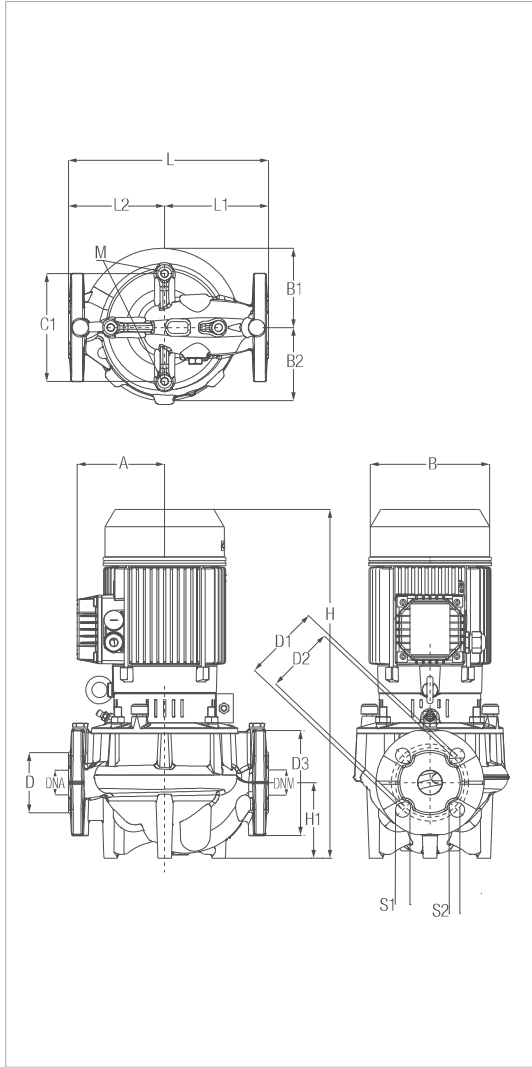
MODEL	ELECTRICAL DATA							
	CENTRE DISTANCE	PUMP CONNECTIONS	POWER INPUT 50 HZ	P1 MAX [kW]	P2 NOMINAL		In [A]	
					kW	HP	230	400
CP2-G 32-4800 T	320	DN 32 PN 16 DN 32 PN 10	400-690V	6,5	5,5	7,48	18,2 A	10,5 A

MODEL	A	B	B1	B2	C1	D	D1	S1	D2	S2	D3	DNA	DNM	H	H1	L	L1	L2	M	PACKING DIMENSIONS			VOLUME (mc)	WEIGHT Kg
																				L/A	L/B	H		
CP2-G 32-4800 T	202	258	129	120	180	80	100	14	90	19	140	32	33	689	90	320	165	155	10	0,7	0,6	1,1	0,46	74

# CP2 - IN-LINE PUMPS

Liquid temperature range: from -15°C to +140°C - Maximum operating pressure: 16 bar (1600 kPa)

IN-LINE PUMPS



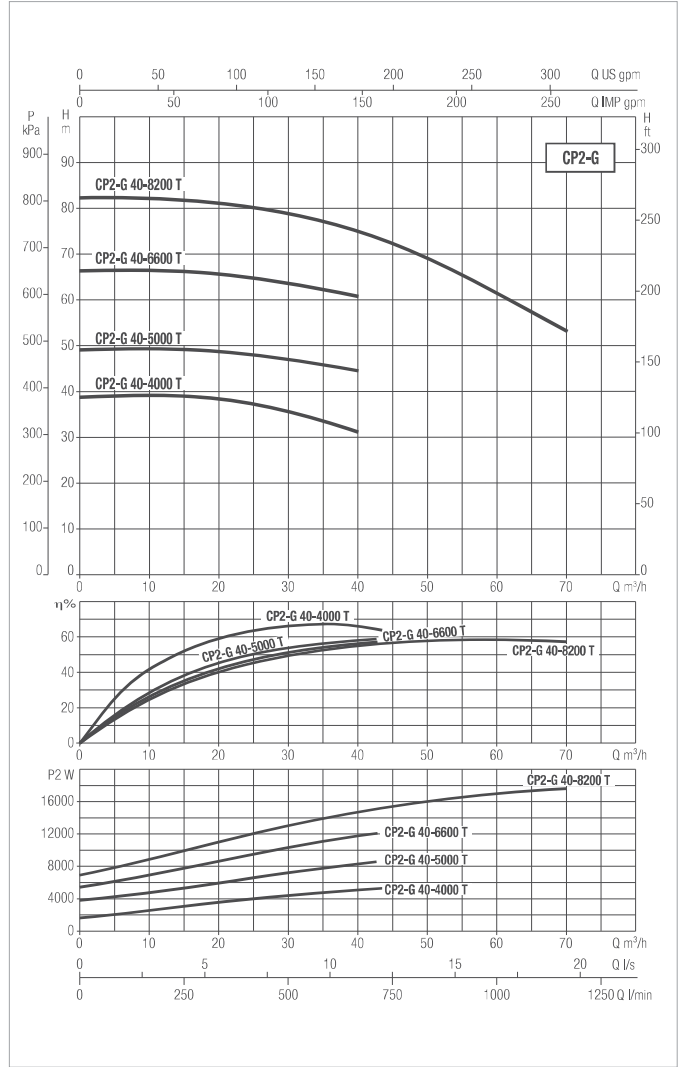
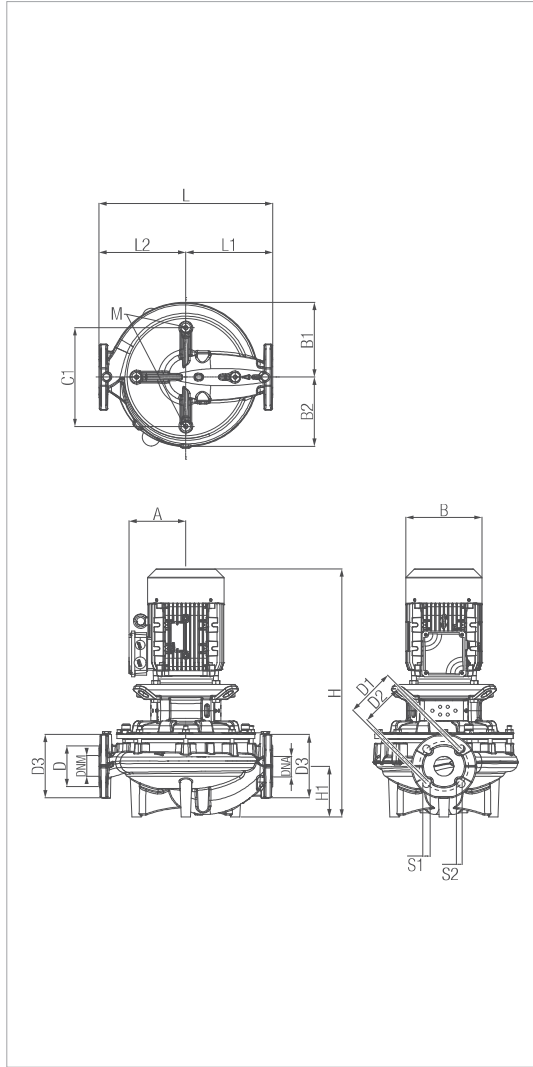
The performance curves are based on kinematic viscosity values = 1 mm<sup>2</sup>/s and density equal to 1000 kg/m<sup>3</sup>. Curve tolerance according to ISO 9906.

MODEL	ELECTRICAL DATA							
	CENTRE DISTANCE	PUMP CONNECTIONS	POWER INPUT 50 HZ	P1 MAX [kW]	P2 NOMINAL		In [A]	
					kW	HP	230	400
CP2 40-600 T	250	DN 40 PN 16 DN 40 PN 10	230-400V	0.37	0.25	0.33	1.7	1
CP2 40-1000 T				0.48	0.37	0.55	2.1	1.2
CP2 40-1300 T				0.73	0.55	0.75	2.6	1.5
CP2 40-1900 T	320			1.83	1.5	2	7.8	4.5
CP2 40-2200 T				2.9	2.2	3	9.7	5.6
CP2 40-2800 T				4.08	3	4	12.5	7.2
CP2 40-3300 T				4.95	4	5.5	16.1	9.3

MODEL	A	B	B1	B2	C1	D	D1	S1	D2	S2	D3	DNA	DNM	H	H1	L	L1	L2	M	PACKING DIMENSIONS			VOLUME (mc)	WEIGHT Kg
																				L/A	L/B	H		
CP2 40-600 T	110	143	105	90	100	80	110	21,5	100	21,5	150	40	40	396	66	250	125	125	10	0,60	0,30	0,50	0,09	24,60
CP2 40-1000 T	110	143	105	90	100	80	110	21,5	100	21,5	150	40	40	396	66	250	125	125	10	0,60	0,30	0,50	0,09	24,60
CP2 40-1300 T	110	143	105	90	100	80	110	21,5	100	21,5	150	40	40	396	66	250	125	125	10	0,60	0,30	0,50	0,09	24,60
CP2 40-1900 T	118	155	130,6	130,6	180	88	110	20	100	20	150	40	40	522	95	320	168	152	10	0,60	0,30	0,50	0,09	40,20
CP2 40-2200 T	118	155	130,6	130,6	180	88	110	20	100	20	150	40	40	522	95	320	168	152	10	0,60	0,30	0,50	0,09	40,20
CP2 40-2800 T	134,5	187	130,6	130,6	180	88	110	20	100	20	150	40	40	531	95	320	168	152	10	0,60	0,30	0,50	0,09	49,80
CP2 40-3300 T	134,5	187	130,6	130,6	180	88	110	20	100	20	150	40	40	531	95	320	168	152	10	0,60	0,30	0,50	0,09	49,80

# CP2-G - IN-LINE PUMPS

Liquid temperature range: from -15°C to +140°C - Maximum operating pressure: 16 bar (1600 kPa)



The performance curves are based on kinematic viscosity values = 1 mm<sup>2</sup>/s and density equal to 1000 kg/m<sup>3</sup>. Curve tolerance according to ISO 9906.

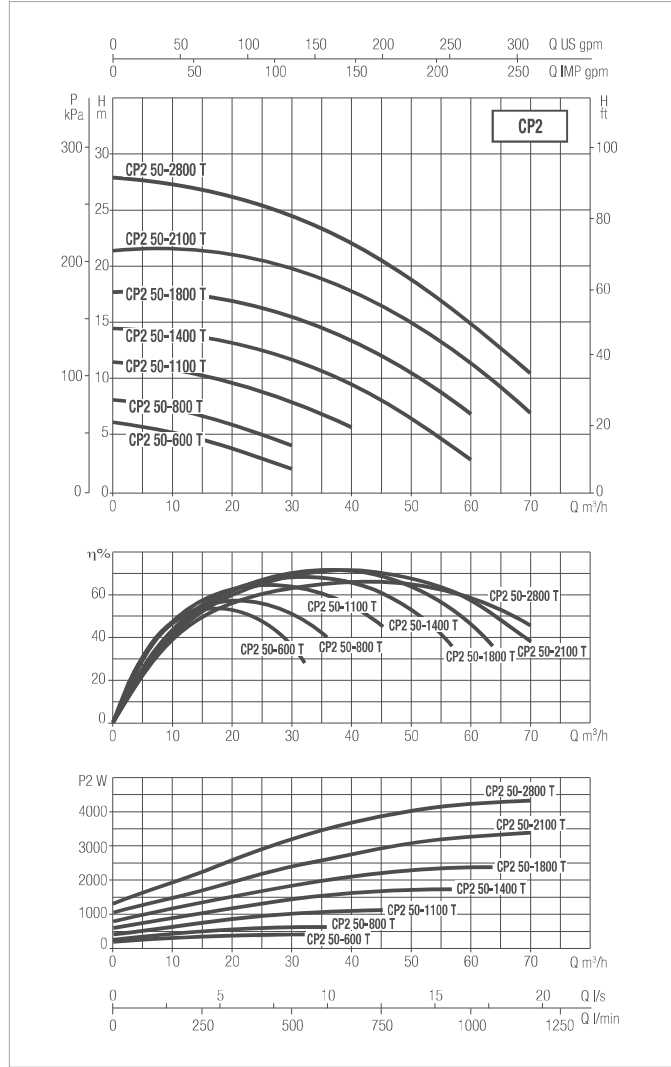
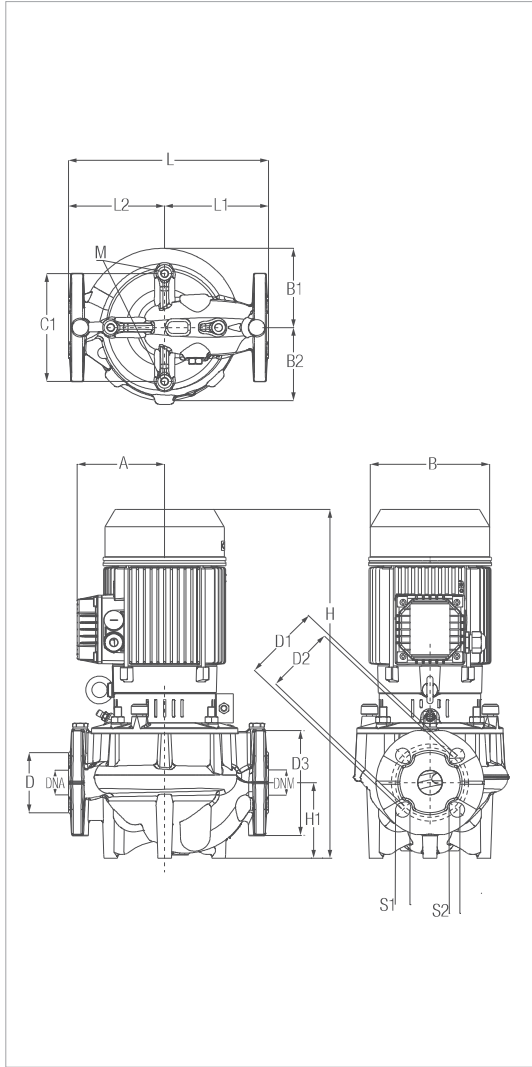
MODEL	ELECTRICAL DATA							
	CENTRE DISTANCE	PUMP CONNECTIONS	POWER INPUT 50 HZ	P1 MAX [kW]	P2 NOMINAL		In [A]	
					kW	HP	230	400
CP2-G 40-4000 T	320	DN 40 PN 16 DN 40 PN 10	400-690V	6.76	5.5	7.5	10.9	6.3
CP2-G 40-5000 T	440			12.6	7.5	10	20.2	11.7
CP2-G 40-6600 T				16.5	11	15	25.9	15.0
CP2-G 40-8200 T				19.5	15	20	31.7	18.3

MODEL	A	B	B1	B2	C1	D	D1	S1	D2	S2	D3	DNA	DNM	H	H1	L	L1	L2	M	PACKING DIMENSIONS			VOLUME (mc)	WEIGHT Kg
																				L/A	L/B	H		
CP2-G 40-4000 T	202	262	150	150	180	88	110	20	100	20	150	40	40	693,5	95	320	168	152	10	0,37	0,30	0,69	0,08	102,80
CP2-G 40-5000 T	188	260	180	180	250	88	110	20	100	20	150	40	40	715,5	99,5	440	220	220	10	0,44	0,36	0,72	0,11	118,80
CP2-G 40-6600 T	194,5	248	180	180	250	88	110	20	100	20	150	40	40	838,5	99,5	440	220	220	10	0,44	0,36	0,84	0,13	166,70
CP2-G 40-8200 T	194,5	248	180	180	250	88	110	20	100	20	150	40	40	838,5	99,5	440	220	220	10	0,44	0,36	0,84	0,13	166,70

# CP2 - IN-LINE PUMPS

Liquid temperature range: from -15°C to +140°C - Maximum operating pressure: 16 bar (1600 kPa)

IN-LINE PUMPS



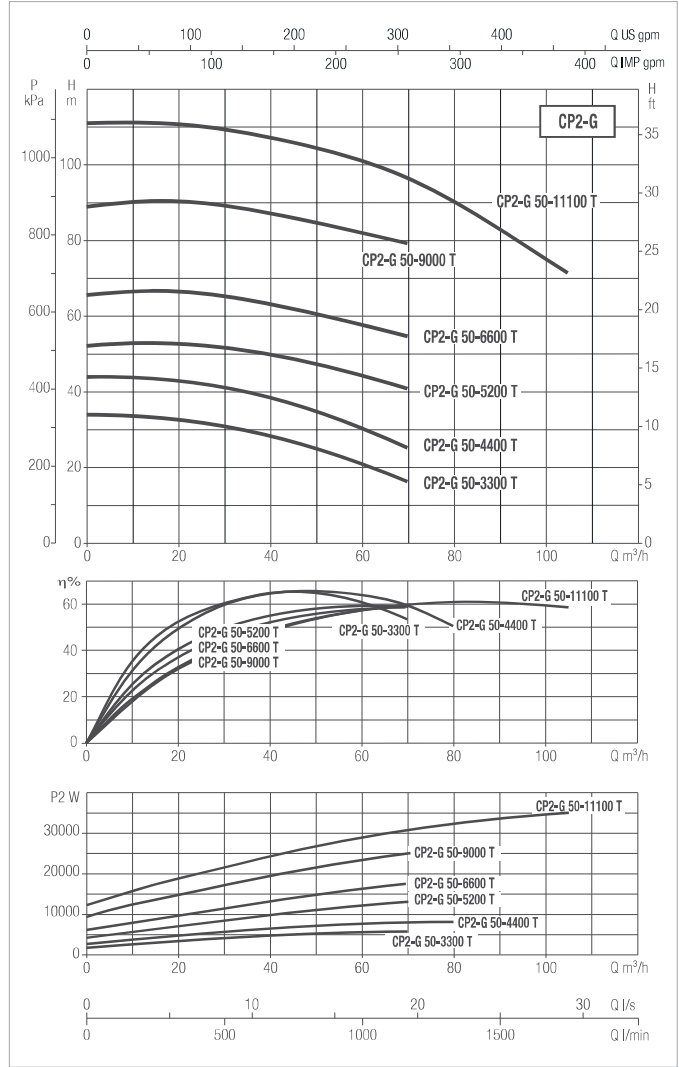
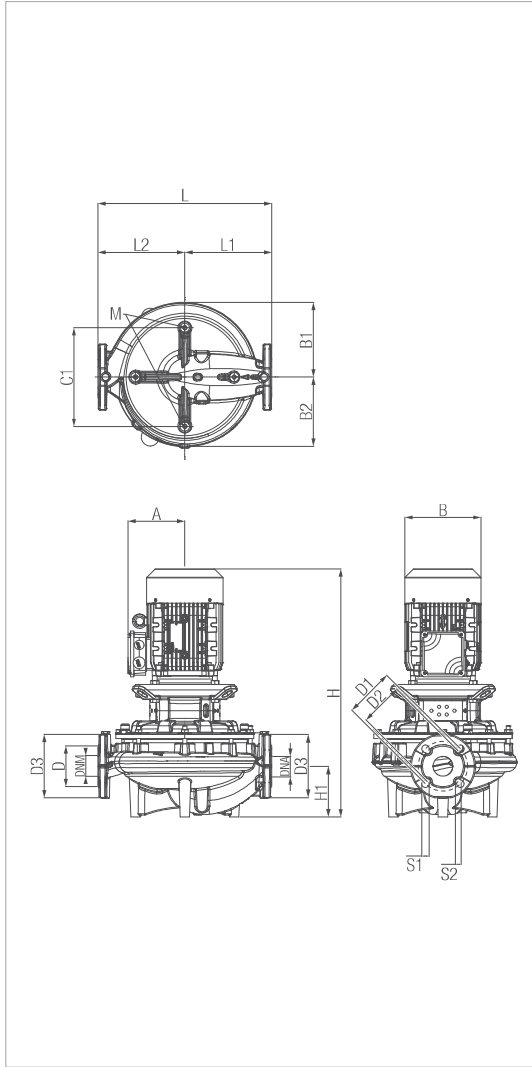
The performance curves are based on kinematic viscosity values = 1 mm<sup>2</sup>/s and density equal to 1000 kg/m<sup>3</sup>. Curve tolerance according to ISO 9906.

MODEL	ELECTRICAL DATA							
	CENTRE DISTANCE	PUMP CONNECTIONS	POWER INPUT 50 HZ	P1 MAX [kW]	P2 NOMINAL		In [A]	
					kW	HP	230	400
CP2 50-600 T	280	DN 50 PN 16 DN 50 PN 10	230-400V	0.54	0.55	0.75	2.1	1.2
CP2 50-800 T				0.82	0.55	0.75	2.6	1.5
CP2 50-1100 T				1.4	0.8	1	4.2	2.4
CP2 50-1400 T				2.1	1.85	2.5	6.8	3.9
CP2 50-1800 T				2.8	2.2	3	8.8	5.1
CP2 50-2100 T	340			3.9	3	4	11.8	6.8
CP2 50-2800 T				5.1	4	5.5	15.2	8.8

MODEL	A	B	B1	B2	C1	D	D1	S1	D2	S2	D3	DNA	DNM	H	H1	L	L1	L2	M	PACKING DIMENSIONS			VOLUME (mc)	WEIGHT Kg
																				L/A	L/B	H		
CP2 50-600 T	110	143	112,3	96	100	90	125	23,3	110	18	165	50	50	415	73	280	140	140	10	0,60	0,30	0,50	0,09	28,2
CP2 50-800 T	110	143	112,3	96	100	90	125	23,3	110	18	165	50	50	415	73	280	140	140	10	0,60	0,30	0,50	0,09	28,2
CP2 50-1100 T	110	143	112,3	96	100	90	125	23,3	110	18	165	50	50	415	73	280	140	140	10	0,60	0,30	0,50	0,09	28,2
CP2 50-1400 T	118	155	112,3	96	100	90	125	23,3	110	18	165	50	50	497	73	280	140	140	10	0,60	0,30	0,50	0,09	36,9
CP2 50-1800 T	118	155	112,3	96	100	90	125	23,3	110	18	165	50	50	497	73	280	140	140	10	0,60	0,30	0,50	0,09	36,9
CP2 50-2100 T	134,5	187	112,3	96	100	90	125	23,3	110	18	165	50	50	486,5	73	280	140	140	10	0,60	0,30	0,50	0,09	46,2
CP2 50-2800 T	134,5	187	136,4	131,2	180	100	125	21,8	110	14	165	50	50	560	105	340	172,5	167,5	10	0,60	0,30	0,50	0,09	52,6

# CP2-G - IN-LINE PUMPS

Liquid temperature range: from -15°C to +140°C - Maximum operating pressure: 16 bar (1600 kPa)



The performance curves are based on kinematic viscosity values = 1 mm<sup>2</sup>/s and density equal to 1000 kg/m<sup>3</sup>. Curve tolerance according to ISO 9906.

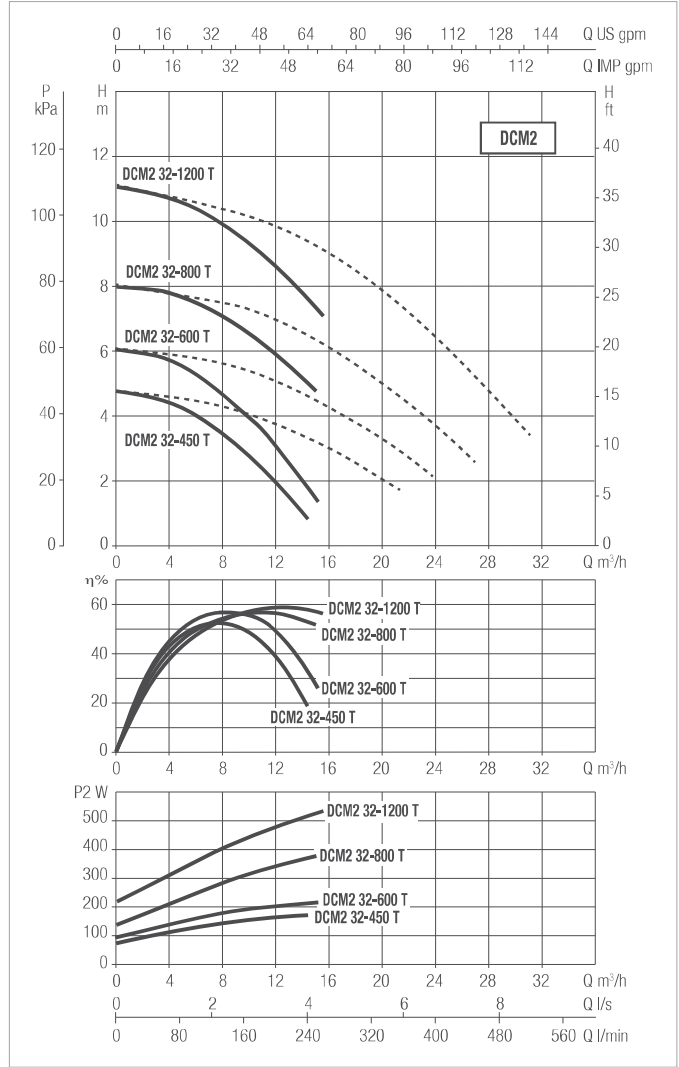
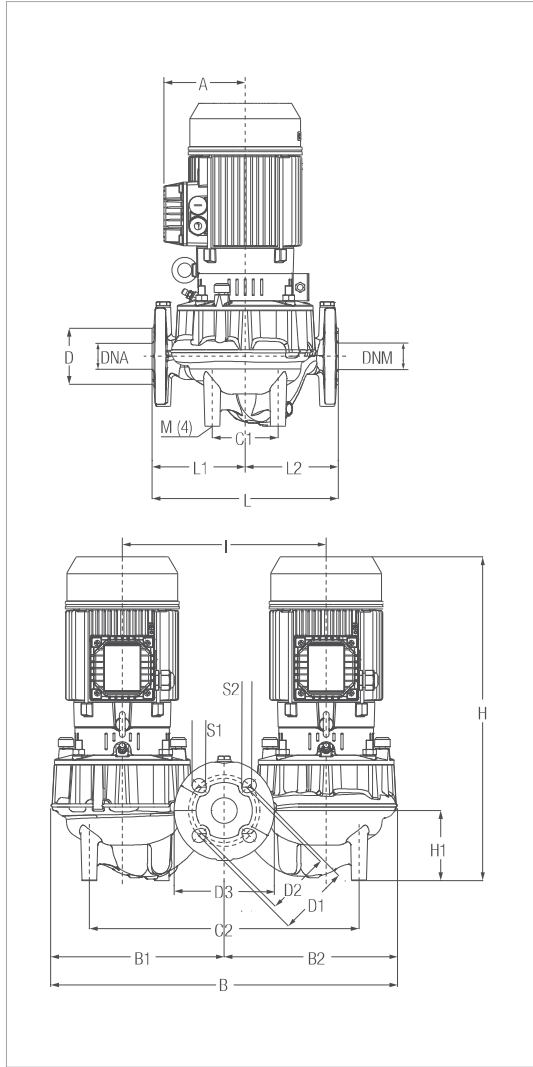
MODEL	ELECTRICAL DATA							
	CENTRE DISTANCE	PUMP CONNECTIONS	POWER INPUT 50 HZ	P1 MAX [kW]	P2 NOMINAL		In [A]	
					kW	HP	230	400
CP2-G 50-3300 T	340	DN 50 PN 16 DN 50 PN 10	400-690V	6.4	5.5	7.5	10.7	6.2
CP2-G 50-4400 T				9.1	7.5	10	14.8	8.5
CP2-G 50-5200 T	440			17.1	11	15	26.9	15.5
CP2-G 50-6600 T				23.1	15	22	37.4	21.6
CP2-G 50-9000 T				33.8	22	30	54.5	31.5
CP2-G 50-11100 T				39.4	30	40	66.1	38.2

MODEL	A	B	B1	B2	C1	D	D1	S1	D2	S2	D3	DNA	DNM	H	H1	L	L1	L2	M	PACKING DIMENSIONS			VOLUME (mc)	WEIGHT Kg
																				L/A	L/B	H		
																				CP2-G 50-3300 T	202	262		
CP2-G 50-4400 T	202	262	136,4	131,2	180	100	125	21,8	110	14	165	50	50	721,5	105	340	172,5	167,5	10	0,38	0,30	0,70	0,08	106,1
CP2-G 50-5200 T	194,5	248	189	180	180	100	125	21,8	110	14	165	50	50	866	128,4	440	220	220	10	0,44	0,37	0,87	0,14	160,8
CP2-G 50-6600 T	194,5	248	189	180	180	100	125	21,8	110	14	165	50	50	866	128,4	440	220	220	10	0,44	0,37	0,87	0,14	160,8
CP2-G 50-9000 T	261	355,5	189	180	180	100	125	21,8	110	14	165	50	50	967	128,4	440	220	220	10	0,48	0,37	0,97	0,17	283
CP2-G 50-11100 T	296	396	189	180	180	100	125	21,8	110	14	165	50	50	1027	128,4	440	220	220	10	0,52	0,40	1,00	0,21	311,2

# DCM2 - IN-LINE PUMPS

Liquid temperature range: from -15°C to +140°C - Maximum operating pressure: 16 bar (1600 kPa)

IN-LINE PUMPS



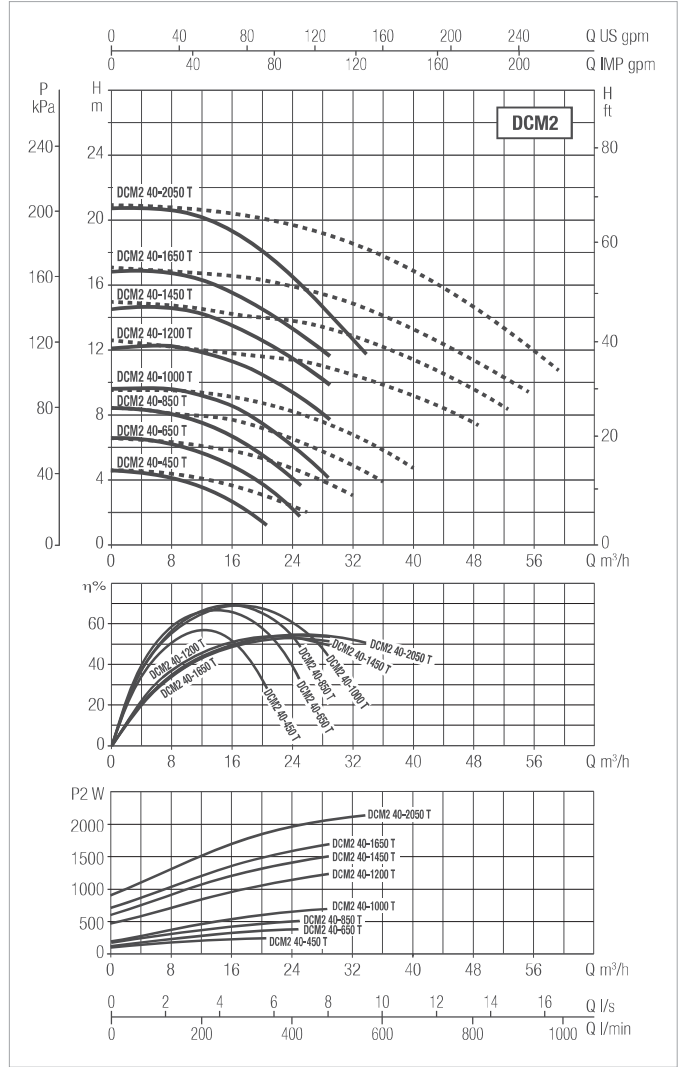
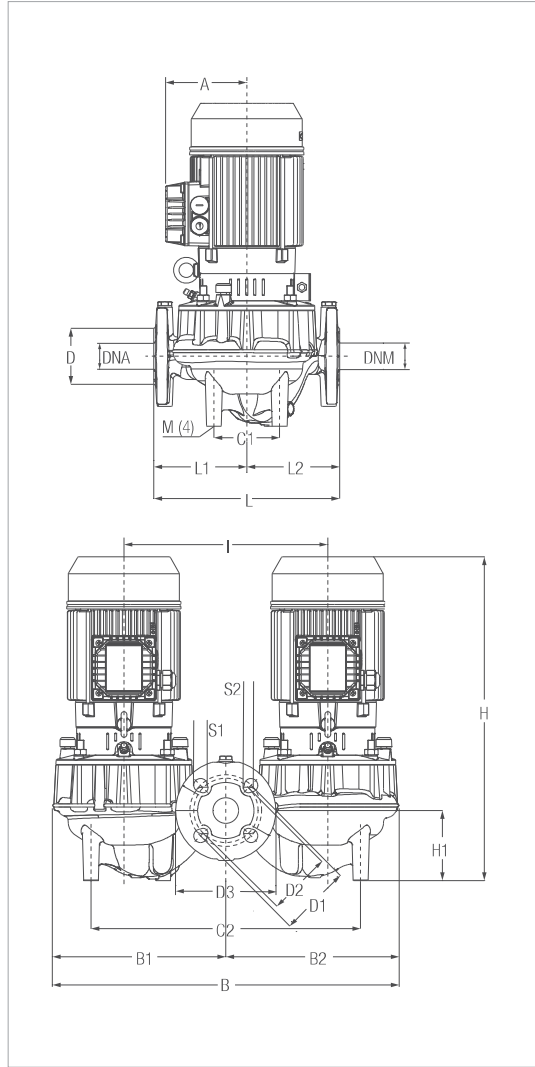
The performance curves are based on kinematic viscosity values = 1 mm<sup>2</sup>/s and density equal to 1000 kg/m<sup>3</sup>. Curve tolerance according to ISO 9906.

MODEL	ELECTRICAL DATA							
	CENTRE DISTANCE	PUMP CONNECTIONS	POWER INPUT 50 HZ	P1 MAX [kW]	P2 NOMINAL		In [A]	
					kW	HP	230	400
DCM2 32-450 T	260	DN 32 PN 16 DN 32 PN 10	230-400V	0,26	0,25	0,34	1,2 A	0,7 A
DCM2 32-600 T				0,33	0,25	0,34	1,3 A	0,8 A
DCM2 32-800 T	0,51			0,37	0,50	2,0 A	1,2 A	
DCM2 32-1200 T	0,73			0,55	0,75	2,4 A	1,4 A	

MODEL	A	B	B1	B2	C1	C2	D	D1	S1	D2	S2	D3	DNA	DNM	H	H1	I	L	L1	L2	M	PACKING DIMENSIONS			VOLUME (mc)	WEIGHT Kg
																						L/A	L/B	H		
DCM2 32-450 T	110	485	243	243	92	377	80	100	14	90	19	140	36	37	445	98	285	260	130	130	10	540	420	610	0,138	46
DCM2 32-600 T	110	485	243	243	92	377	80	100	14	90	19	140	36	37	445	98	285	260	130	130	10	540	420	610	0,138	46
DCM2 32-800 T	110	609	305	305	113	463	78	100	14	90	19	140	33	33	459	90	350	320	150	170	10	684	426	834	0,245	54,5
DCM2 32-1200 T	110	609	305	305	113	463	78	100	14	90	19	140	33	33	459	90	350	320	150	170	10	684	426	834	0,245	54,5

# DCM2 - IN-LINE PUMPS

Liquid temperature range: from -15°C to +140°C - Maximum operating pressure: 16 bar (1600 kPa)



The performance curves are based on kinematic viscosity values = 1 mm<sup>2</sup>/s and density equal to 1000 kg/m<sup>3</sup>. Curve tolerance according to ISO 9906.

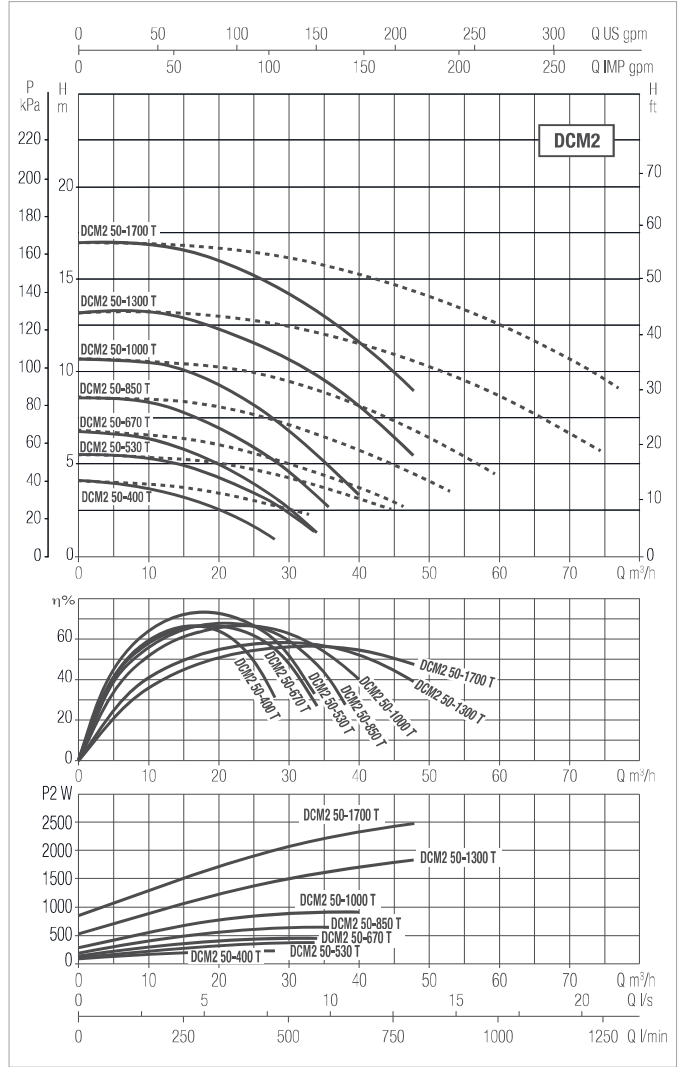
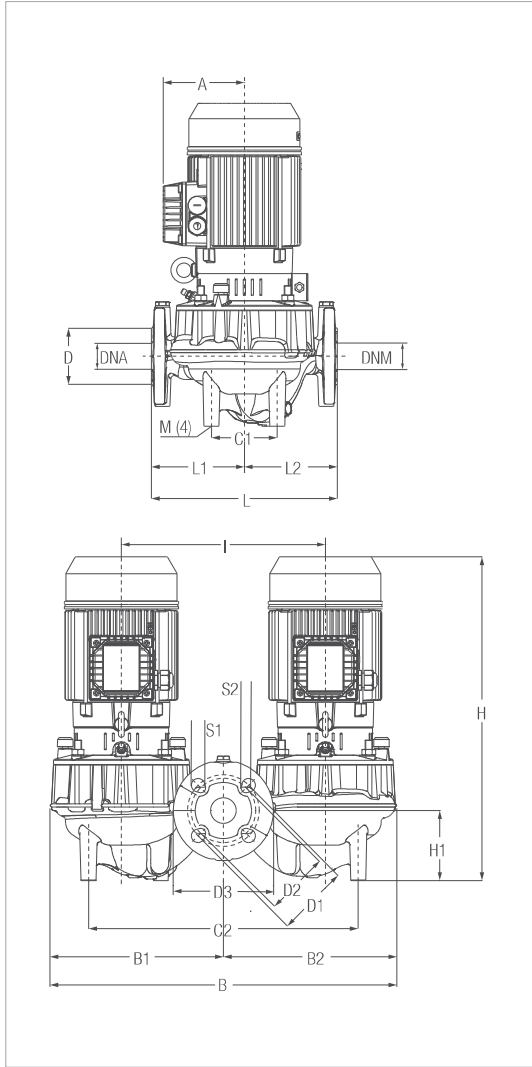
MODEL	ELECTRICAL DATA							
	CENTRE DISTANCE	PUMP CONNECTIONS	POWER INPUT 50 HZ	P1 MAX [kW]	P2 NOMINAL		In [A]	
					kW	HP	230	400
DCM2 40-450 T	320	DN 40 PN 16 DN 40 PN 10	230-400V	0.26	0.25	0.33	1.2	0.7
DCM2 40-650 T				0.51	0.37	0.55	1.9	1.1
DCM2 40-850 T				0.73	0.55	0.75	2.3	1.3
DCM2 40-1000 T				0.73	0.55	0.75	2.9	1.7
DCM2 40-1200 T				1.58	2.2	3	7.6	4.4
DCM2 40-1450 T				1.9	2.2	3	8	4.6
DCM2 40-1650 T				2.12	2.2	3	8.5	4.9
DCM2 40-2050 T	440			2.49	2.2	3	9.2	5.3

MODEL	A	B	B1	B2	C1	C2	D	D1	S1	D2	S2	D3	DNA	DNM	H	H1	I	L	L1	L2	M	PACKING DIMENSIONS			VOLUME (mc)	WEIGHT Kg
																						L/A	L/B	H		
DCM2 40-450 T	110	622	311	311	113	463	88	110	20	100	20	150	40	40	440	95	350	320	170	150	10	0.72	0.60	0.58	0.25	65,20
DCM2 40-650 T	110	622	311	311	113	463	88	110	20	100	20	150	40	40	455	95	350	320	170	150	10	0.72	0.60	0.58	0.25	65,20
DCM2 40-850 T	110	622	311	311	113	463	88	110	20	100	20	150	40	40	455	95	350	320	170	150	10	0.72	0.60	0.58	0.25	65,20
DCM2 40-1000 T	113.5	622	311	311	113	463	88	110	20	100	20	150	40	40	448	95	350	320	170	150	10	0.72	0.60	0.58	0.25	68,20
DCM2 40-1200 T	134.5	770	385	385	177	577	88	110	20	100	20	150	40	40	560.5	99.5	400	440	240	200	10	1.13	0.58	0.74	0.48	128,90
DCM2 40-1450 T	134.5	770	385	385	177	577	88	110	20	100	20	150	40	40	560.5	99.5	400	440	240	200	10	1.13	0.58	0.74	0.48	128,90
DCM2 40-1650 T	134.5	770	385	385	177	577	88	110	20	100	20	150	40	40	560.5	99.5	400	440	240	200	10	1.13	0.58	0.74	0.48	128,90
DCM2 40-2050 T	134.5	770	385	385	177	577	88	110	20	100	20	150	40	40	560.5	99.5	400	440	240	200	10	1.13	0.58	0.74	0.48	128,90

# DCM2 - IN-LINE PUMPS

Liquid temperature range: from -15°C to +140°C - Maximum operating pressure: 16 bar (1600 kPa)

IN-LINE PUMPS



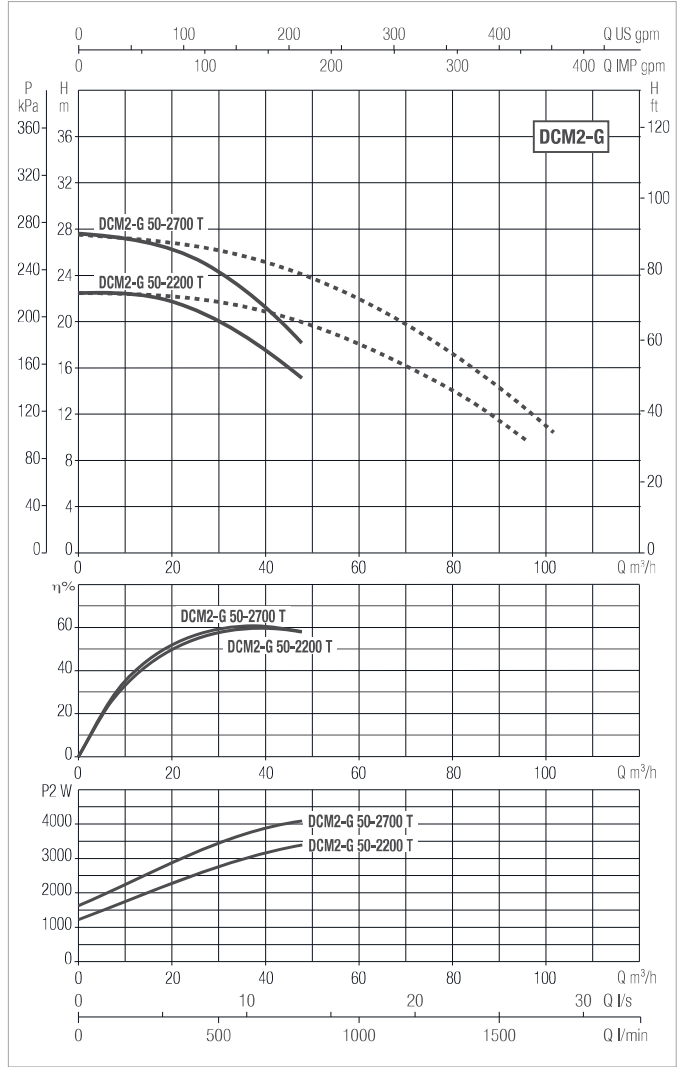
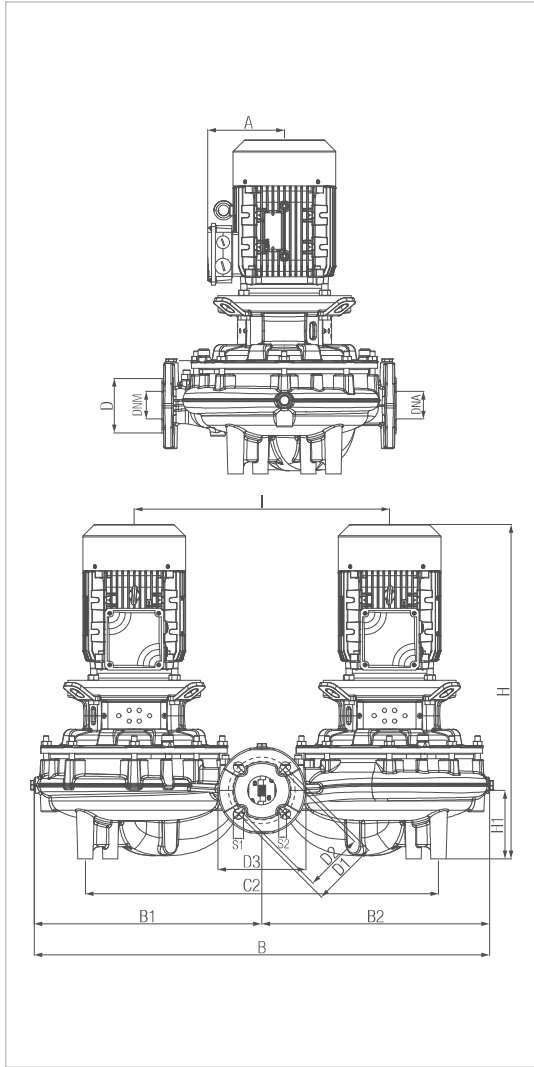
The performance curves are based on kinematic viscosity values = 1 mm<sup>2</sup>/s and density equal to 1000 kg/m<sup>3</sup>. Curve tolerance according to ISO 9906.

MODEL	ELECTRICAL DATA							
	CENTRE DISTANCE	PUMP CONNECTIONS	POWER INPUT 50 HZ	P1 MAX [kW]	P2 NOMINAL		In [A]	
					kW	HP	230	400
DCM2 50-400 T	280	DN 50 PN 16 DN 50 PN 10	230-400V	0.34	0.2	0.27	1.3	0.77
DCM2 50-530 T				0.49	0.55	0.75	1.9	1.1
DCM2 50-670 T				0.59	0.55	0.75	2.1	1.2
DCM2 50-850 T	340			0.83	0.75	1	2.9	1.7
DCM2 50-1000 T				1.11	1.1	1.5	6.9	4
DCM2 50-1300 T				2.15	2.2	3	8.3	4.8
DCM2 50-1700 T	440			3.3	3	4	10	5.8

MODEL	A	B	B1	B2	C1	C2	D	D1	S1	D2	S2	D3	DNA	DNM	H	H1	I	L	L1	L2	M	PACKING DIMENSIONS			VOLUME (mc)	WEIGHT Kg
																						L/A	L/B	H		
DCM2 50-400 T	110	530	261	270	92	392	90	125	23,3	110	18	165	50	50	415	73	300	280	133	147	10	0,72	0,6	0,58	0,25	58,2
DCM2 50-530 T	110	530	261	270	92	392	90	125	23,3	110	18	165	50	50	430,5	73	300	280	133	147	10	0,72	0,6	0,58	0,25	58,2
DCM2 50-670 T	110	631	313	319	113	463	100	125	21,8	110	14	165	50	50	483,5	105	350	340	190	150	10	0,72	0,6	0,58	0,25	70,8
DCM2 50-850 T	118	631	313	319	113	463	100	125	21,8	110	14	165	50	50	483,5	105	350	340	190	150	10	0,72	0,6	0,58	0,25	73,8
DCM2 50-1000 T	134,5	631	313	319	113	463	100	125	21,8	110	14	165	50	50	560	105	350	340	190	150	10	0,72	0,6	0,58	0,25	107
DCM2 50-1300 T	134,5	869	435	435	184	664	100	125	21,8	110	14	165	50	50	589	128,4	480	440	230	210	10	1,13	0,58	0,74	0,48	134,7
DCM2 50-1700 T	134,5	869	435	435	184	664	100	125	21,8	110	14	165	50	50	589	128,4	480	440	230	210	10	1,13	0,58	0,74	0,48	134,7

# DCM2-G - IN-LINE PUMPS

Liquid temperature range: from -15°C to +140°C - Maximum operating pressure: 16 bar (1600 kPa)



The performance curves are based on kinematic viscosity values = 1 mm<sup>2</sup>/s and density equal to 1000 kg/m<sup>3</sup>. Curve tolerance according to ISO 9906.

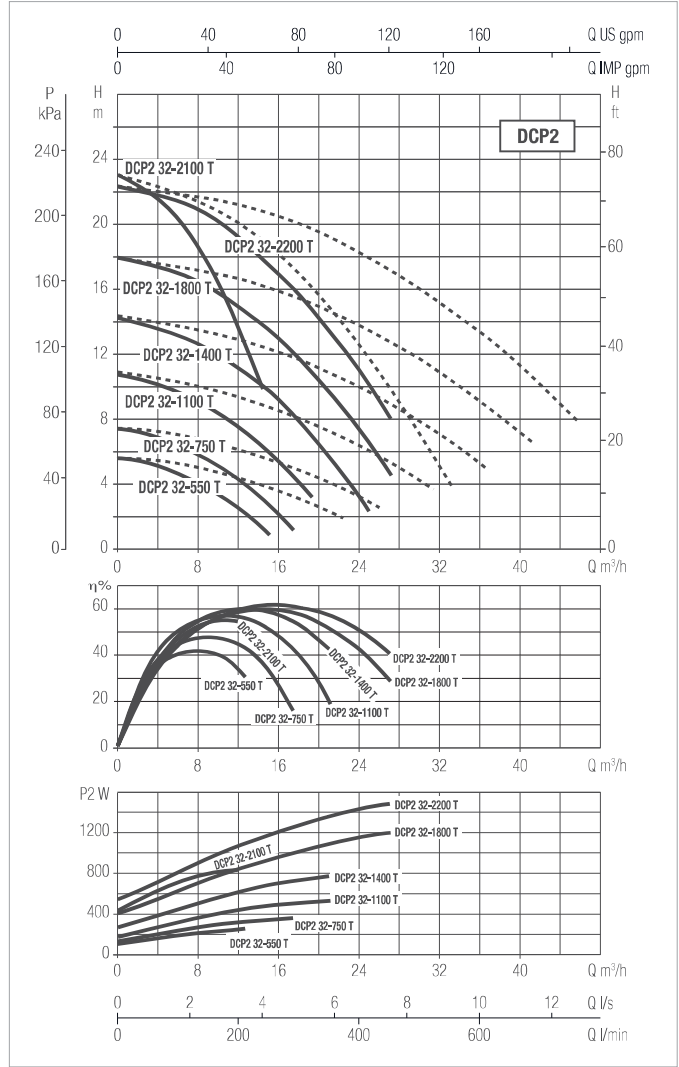
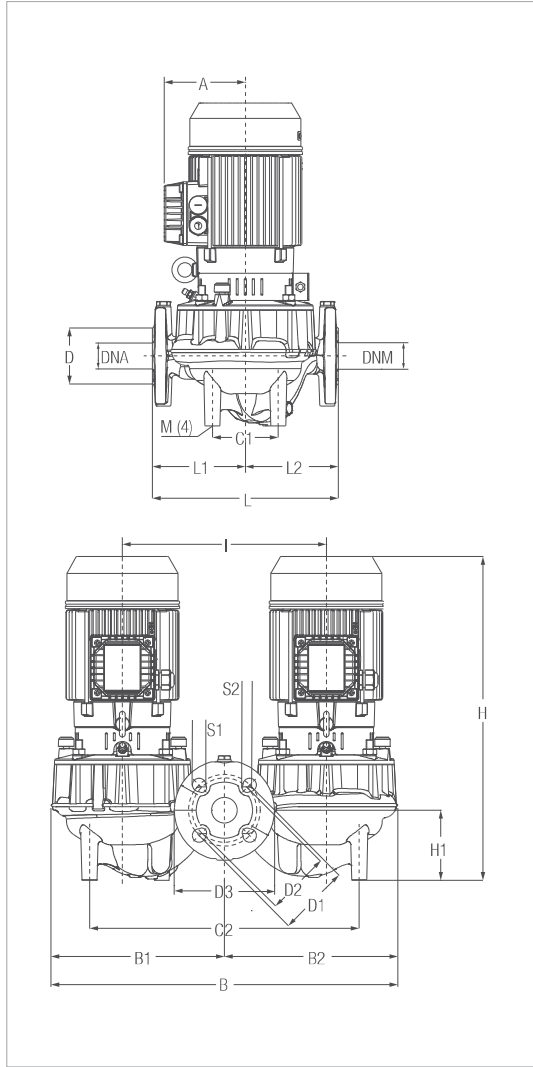
MODEL	ELECTRICAL DATA							
	CENTRE DISTANCE	PUMP CONNECTIONS	POWER INPUT 50 HZ	P1 MAX [kW]	P2 NOMINAL		In [A]	
					kW	HP	230	400
DCM2-G 50-2200 T	440	DN 50 PN 16 DN 50 PN 10	400-690V	4.2	3	4	7.5	4.3
DCM2-G 50-2700 T				4.7	4	5.5	8.4	4.8

MODEL	A	B	B1	B2	C1	C2	D	D1	S1	D2	S2	D3	DNA	DNM	H	H1	I	L	L1	L2	M	PACKING DIMENSIONS			VOLUME (mc)	WEIGHT Kg
																						L/A	L/B	H		
DCM2-G 50-2200 T	144	869	435	435	184	664	100	125	21,8	110	14	165	50	50	628	128,4	480	440	230	210	10	0,87	0,44	0,63	0,24	185,6
DCM2-G 50-2700 T	144	869	435	435	184	664	100	125	21,8	110	14	165	50	50	643	128,4	480	440	230	210	10	0,87	0,44	0,64	0,24	188,6

# DCP2 - IN-LINE PUMPS

Liquid temperature range: from -15°C to +140°C - Maximum operating pressure: 16 bar (1600 kPa)

IN-LINE PUMPS



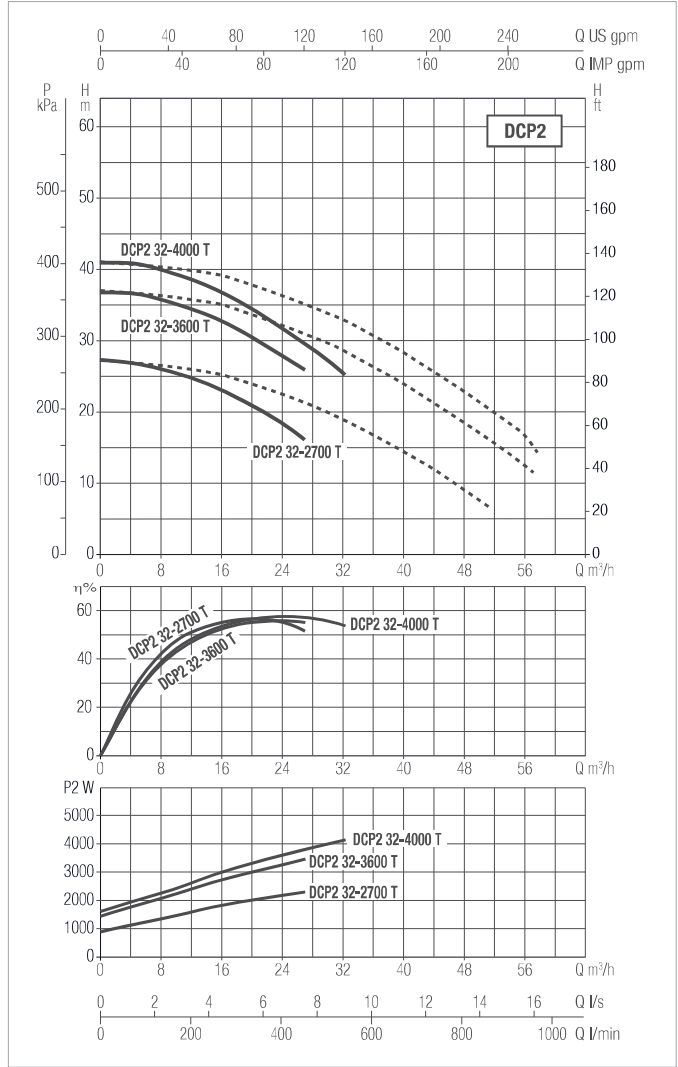
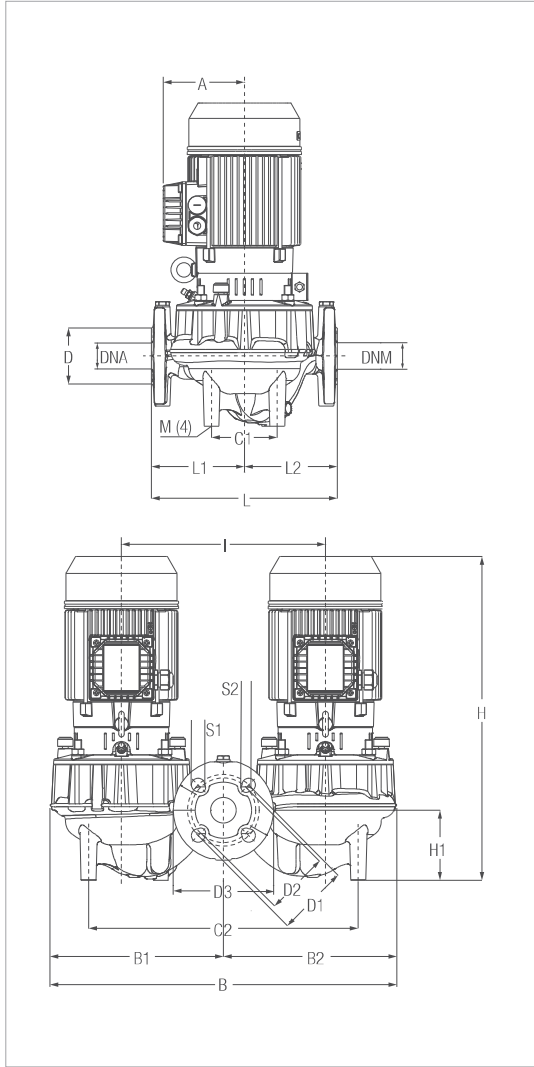
The performance curves are based on kinematic viscosity values = 1 mm<sup>2</sup>/s and density equal to 1000 kg/m<sup>3</sup>. Curve tolerance according to ISO 9906.

MODEL	CENTRE DISTANCE	PUMP CONNECTIONS	ELECTRICAL DATA					
			POWER INPUT 50 HZ	P1 MAX [kW]	P2 NOMINAL		In [A]	
					kW	HP	230	400
DCP2 32-550 T	260	DN 32 PN 16 DN 32 PN 10	230-400V	0,37	0,25	0,34	1,7 A	1 A
DCP2 32-750 T			230-400V	0,48	0,37	0,50	1,9 A	1,1 A
DCP2 32-1100 T			230-400V	0,73	0,55	0,75	2,4 A	1,4 A
DCP2 32-1400 T			230-400V	1,07	0,75	1,02	3,5 A	2 A
DCP2 32-1800 T			230-400V	1,48	1,1	1,50	5,6 A	3,2 A
DCP2 32-2100 T			230-400V	0,85	0,75	1,02	3 A	1,7 A
DCP2 32-2200 T			230-400V	1,83	1,5	2,04	6,3 A	3,6 A

MODEL	A	B	B1	B2	C1	C2	D	D1	S1	D2	S2	D3	DNA	DNM	H	H1	I	L	L1	L2	M	PACKING DIMENSIONS			VOLUME (mc)	WEIGHT Kg
																						L/A	L/B	H		
DCP2 32-550 T	110	485	243	243	92	377	80	100	14	90	19	140	36	37	445	98	285	260	130	130	10	540	420	610	0,138	46
DCP2 32-750 T	110	485	243	243	92	377	80	100	14	90	19	140	36	37	445	98	285	260	130	130	10	540	420	610	0,138	46
DCP2 32-1100 T	110	485	243	243	92	377	80	100	14	90	19	140	36	37	445	98	285	260	130	130	10	540	420	610	0,138	46
DCP2 32-1400 T	110	485	243	243	92	377	80	100	14	90	19	140	36	37	445	98	285	260	130	130	10	540	420	610	0,138	46
DCP2 32-1800 T	114	238	242	480	92	377	80	100	14	90	19	140	36	37	453	98	285	260	130	130	10	540	420	610	0,138	49
DCP2 32-2100 T	110	485	243	243	92	377	80	100	14	90	19	140	36	37	445	98	285	260	130	130	10	540	420	610	0,138	46
DCP2 32-2200 T	114	238	242	480	92	377	80	100	14	90	19	140	36	37	453	98	285	260	130	130	10	540	420	610	0,138	49

# DCP2 - IN-LINE PUMPS

Liquid temperature range: from -15°C to +140°C - Maximum operating pressure: 16 bar (1600 kPa)



The performance curves are based on kinematic viscosity values = 1 mm<sup>2</sup>/s and density equal to 1000 kg/m<sup>3</sup>. Curve tolerance according to ISO 9906.

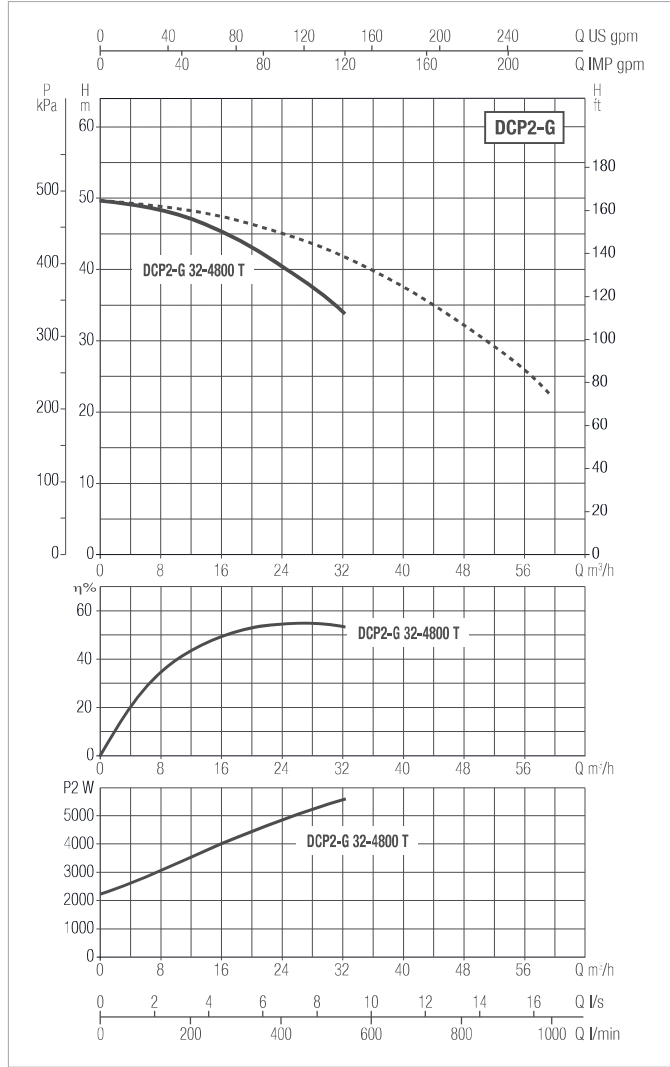
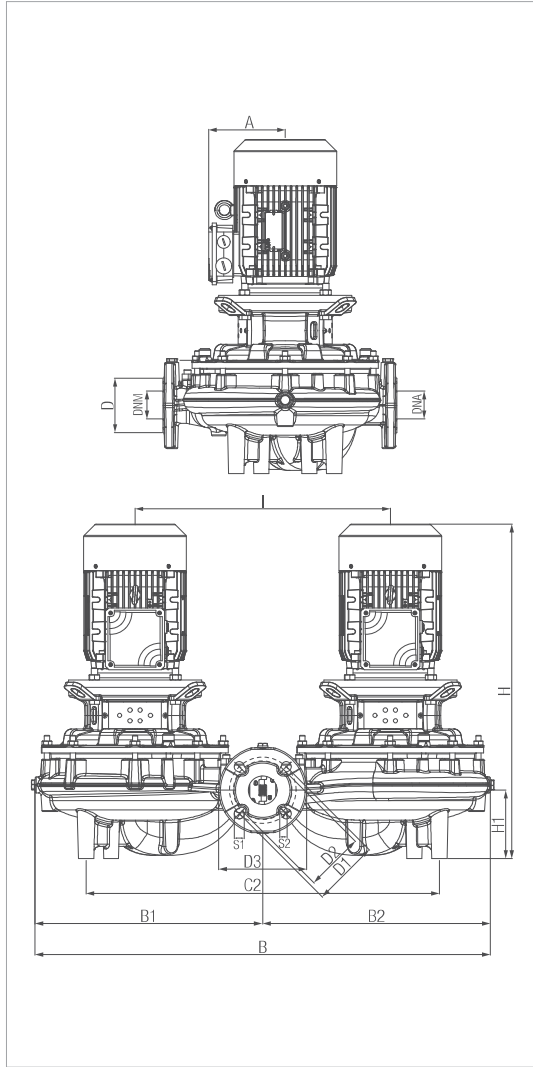
MODEL	ELECTRICAL DATA							
	CENTRE DISTANCE	PUMP CONNECTIONS	POWER INPUT 50 HZ	P1 MAX [kW]	P2 NOMINAL		In [A]	
					kW	HP	230	400
DCP2 32-2700 T	320	DN 32 PN 16 DN 32 PN 10	230-400V	2,9	2,2	2,99	9 A	5,2 A
DCP2 32-3600 T			230-400V	4,08	3	4,08	12,3 A	7,1 A
DCP2 32-4000 T			230-400V	4,95	4	5,44	15,1	8,7 A

MODEL	A	B	B1	B2	C1	C2	D	D1	S1	D2	S2	D3	DNA	DNM	H	H1	I	L	L1	L2	M	PACKING DIMENSIONS			VOLUME (mc)	WEIGHT Kg
																						L/A	L/B	H		
DCP2 32-2700 T	118	609	305	305	113	463	78	100	14	90	19	140	33	33	526	90	350	320	150	170	10	684	426	834	0,245	71,5
DCP2 32-3600 T	135	609	305	305	113	463	78	100	14	90	19	140	33	33	535	90	350	320	150	170	10	684	426	834	0,245	90
DCP2 32-4000 T	135	609	305	305	113	463	78	100	14	90	19	140	33	33	535	90	350	320	150	170	10	684	426	834	0,245	90

# DCP2-G - IN-LINE PUMPS

Liquid temperature range: from -15°C to +140°C - Maximum operating pressure: 16 bar (1600 kPa)

IN-LINE PUMPS



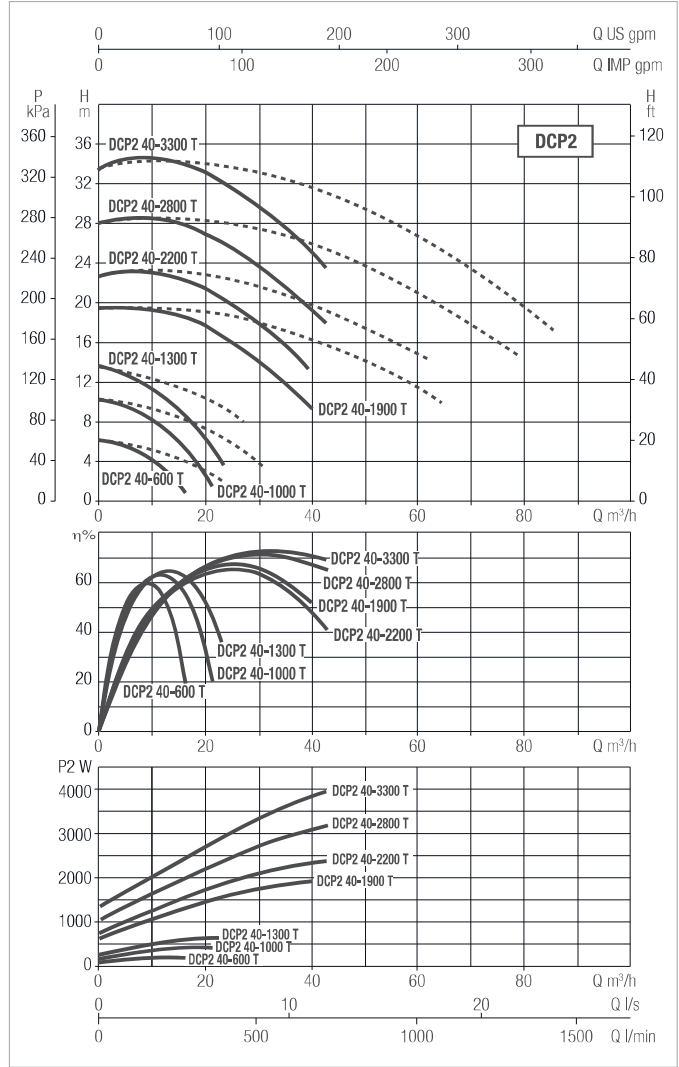
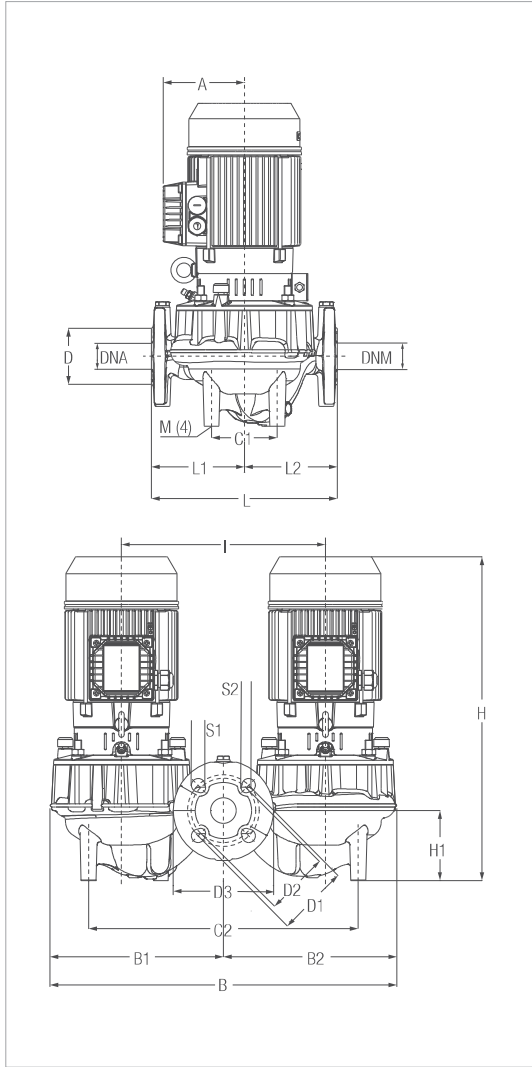
The performance curves are based on kinematic viscosity values = 1 mm<sup>2</sup>/s and density equal to 1000 kg/m<sup>3</sup>. Curve tolerance according to ISO 9906.

MODEL	ELECTRICAL DATA							
	CENTRE DISTANCE	PUMP CONNECTIONS	POWER INPUT 50 HZ	P1 MAX [kW]	P2 NOMINAL		In [A]	
					kW	HP	230	400
DCP2-G 32-4800 T	320	DN 32 PN 16 DN 32 PN 10	400-690V	6,5	5,5	7,48	18,2 A	10,5 A

MODEL	A	B	B1	B2	C1	C2	D	D1	S1	D2	S2	D3	DNA	DNM	H	H1	I	L	L1	L2	M	PACKING DIMENSIONS			VOLUME (mc)	WEIGHT Kg
																						L/A	L/B	H		
DCP2-G 32-4800 T	202	609	305	305	113	463	78	100	14	90	19	140	33	33	689	90	350	320	150	170	10	926	668	1237	0,765	168

# DCP2 - IN-LINE PUMPS

Liquid temperature range: from -15°C to +140°C - Maximum operating pressure: 16 bar (1600 kPa)



The performance curves are based on kinematic viscosity values = 1 mm<sup>2</sup>/s and density equal to 1000 kg/m<sup>3</sup>. Curve tolerance according to ISO 9906.

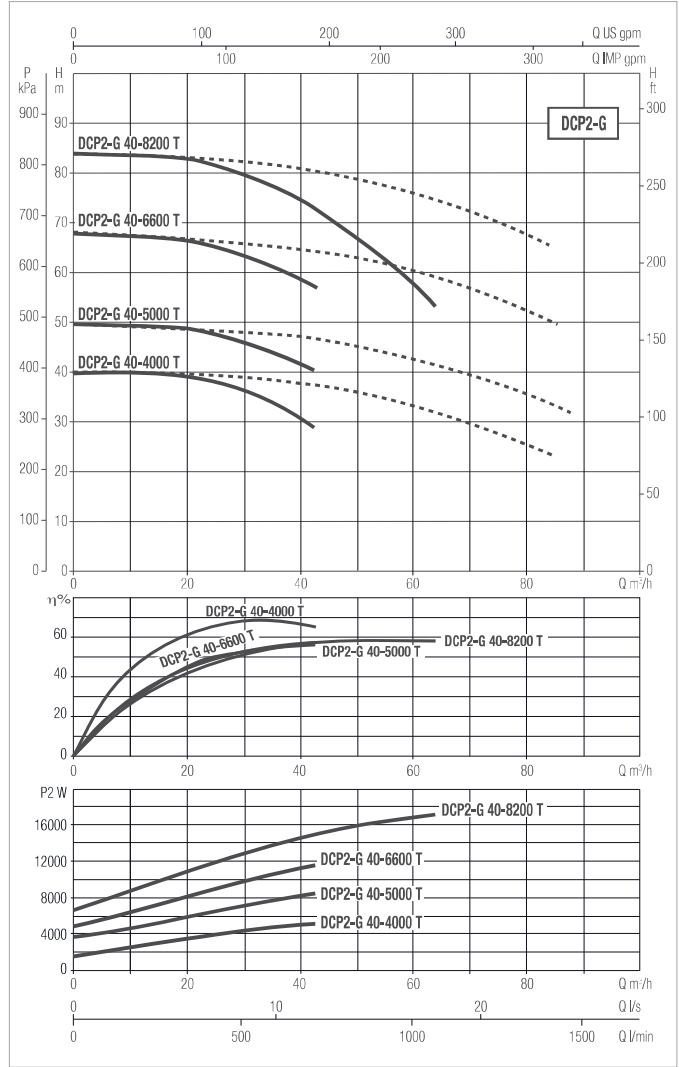
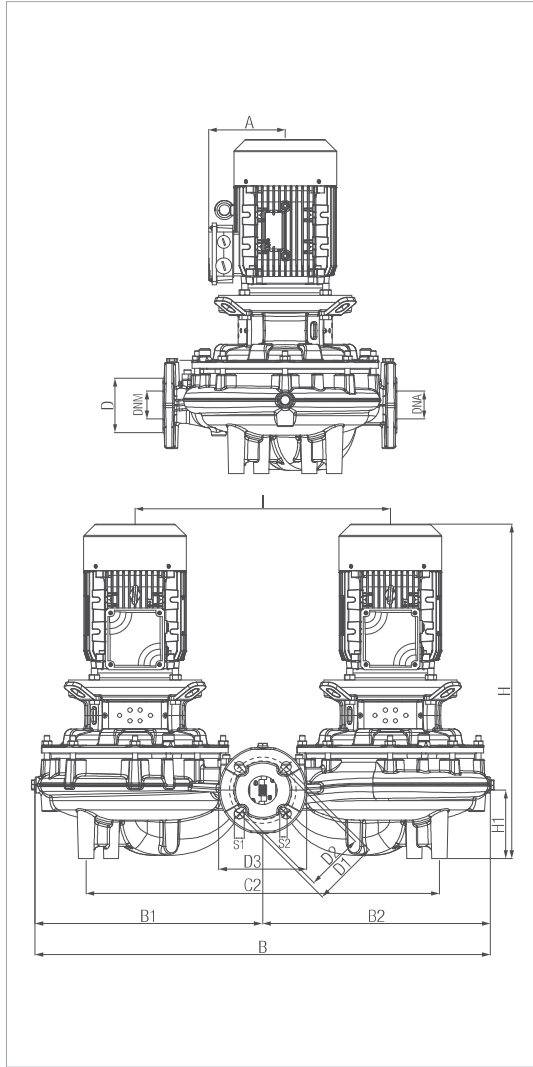
MODEL	ELECTRICAL DATA							
	CENTRE DISTANCE	PUMP CONNECTIONS	POWER INPUT 50 HZ	P1 MAX [kW]	P2 NOMINAL		In [A]	
					kW	HP	230	400
DCP2 40-600 T	249	DN 40 PN 16 DN 40 PN 10	230-400V	0.37	0.25	0.33	1.7	1
DCP2 40-1000 T				0.48	0.37	0.55	1.9	1.1
DCP2 40-1300 T				0.73	0.55	0.75	2.4	1.4
DCP2 40-1900 T				1.83	1.5	2	6.2	3.6
DCP2 40-2200 T				2.9	2.2	3	9	5.2
DCP2 40-2800 T				4.08	3	4	12.3	7.1
DCP2 40-3300 T				4.95	4	5.5	15.1	8.7

MODEL	A	B	B1	B2	C1	C2	D	D1	S1	D2	S2	D3	DNA	DNM	H	H1	I	L	L1	L2	M	PACKING DIMENSIONS			VOLUME (mc)	WEIGHT Kg
																						L/A	L/B	H		
DCP2 40-600 T	110	437	217	220	100	220	80	110	21.5	100	21.5	150	40	40	396	66	220	250	148	102	10	0.72	0.60	0.58	0.25	51,00
DCP2 40-1000 T	110	437	217	220	100	220	80	110	21.5	100	21.5	150	40	40	396	66	220	250	148	102	10	0.72	0.60	0.58	0.25	51,00
DCP2 40-1300 T	110	437	217	220	100	220	80	110	21.5	100	21.5	150	40	40	396	66	220	250	148	102	10	0.72	0.60	0.58	0.25	51,00
DCP2 40-1900 T	118	622	311	311	113	463	88	110	20	100	20	150	40	40	522	95	350	320	170	150	10	0.72	0.60	0.58	0.25	82,20
DCP2 40-2200 T	118	622	311	311	113	463	88	110	20	100	20	150	40	40	522	95	350	320	170	150	10	0.72	0.60	0.58	0.25	82,20
DCP2 40-2800 T	134,5	622	311	311	113	463	88	110	20	100	20	150	40	40	531	95	350	320	170	150	10	0.72	0.60	0.58	0.25	101,40
DCP2 40-3300 T	134,5	622	311	311	113	463	88	110	20	100	20	150	40	40	531	95	350	320	170	150	10	0.72	0.60	0.58	0.25	101,40

# DCP2-G - IN-LINE PUMPS

Liquid temperature range: from -15°C to +140°C - Maximum operating pressure: 16 bar (1600 kPa)

IN-LINE PUMPS



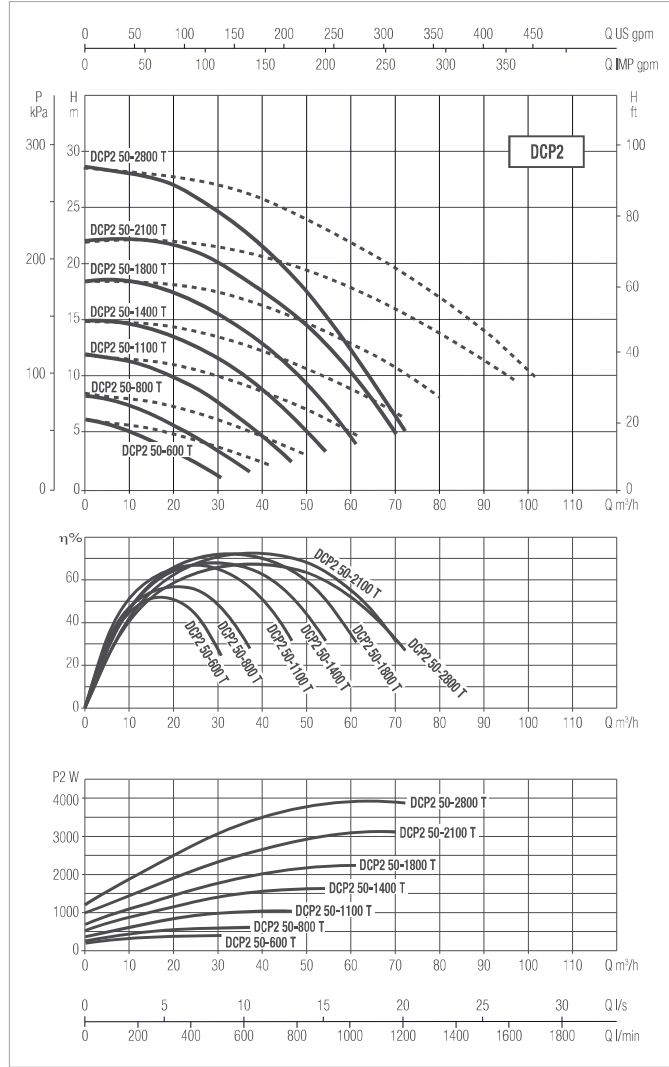
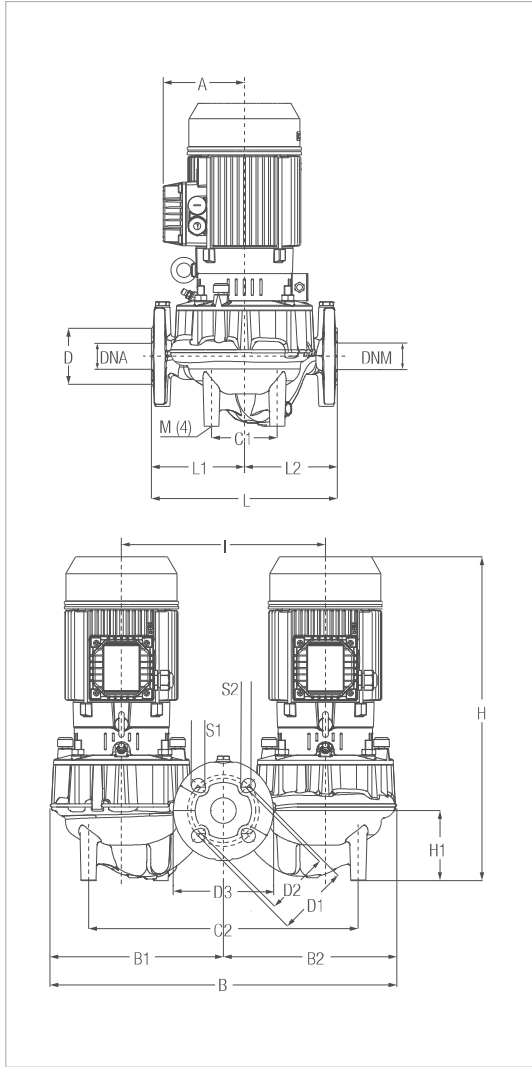
The performance curves are based on kinematic viscosity values = 1 mm<sup>2</sup>/s and density equal to 1000 kg/m<sup>3</sup>. Curve tolerance according to ISO 9906.

MODEL	ELECTRICAL DATA							
	CENTRE DISTANCE	PUMP CONNECTIONS	POWER INPUT 50 HZ	P1 MAX [kW]	P2 NOMINAL		In [A]	
					kW	HP	230	400
DCP2-G 40-4000 T	320	DN 40 PN 16 DN 40 PN 10	400-690V	6.50	5.5	7,5	10.7	6.2
DCP2-G 40-5000 T	440			11.5	7.5	10	18.4	10.6
DCP2-G 40-6600 T				15.6	11	15	25.7	14.8
DCP2-G 40-8200 T				19.4	15	20	33	19.1

MODEL	A	B	B1	B2	C1	C2	D	D1	S1	D2	S2	D3	DNA	DNM	H	H1	I	L	L1	L2	M	PACKING DIMENSIONS			VOLUME (mc)	WEIGHT Kg
																						L/A	L/B	H		
DCP2-G 40-4000 T	202	622	311	311	113	463	88	110	20	100	20	150	40	40	693,5	95	350	320	170	150	10	0,65	0,35	0,69	0,16	189,20
DCP2-G 40-5000 T	188	770	385	385	177	577	88	110	20	100	20	150	40	40	715,5	99,5	400	440	240	200	10	0,77	0,44	0,72	0,24	221,20
DCP2-G 40-6600 T	194,5	770	385	385	177	577	88	110	20	100	20	150	40	40	838,5	99,5	400	440	240	200	10	0,77	0,44	0,84	0,28	316,80
DCP2-G 40-8200 T	194,5	770	385	385	177	577	88	110	20	100	20	150	40	40	838,5	99,5	400	440	240	200	10	0,77	0,44	0,84	0,28	316,80

# DCP2 - IN-LINE PUMPS

Liquid temperature range: from -15°C to +140°C - Maximum operating pressure: 16 bar (1600 kPa)



The performance curves are based on kinematic viscosity values = 1 mm<sup>2</sup>/s and density equal to 1000 kg/m<sup>3</sup>. Curve tolerance according to ISO 9906.

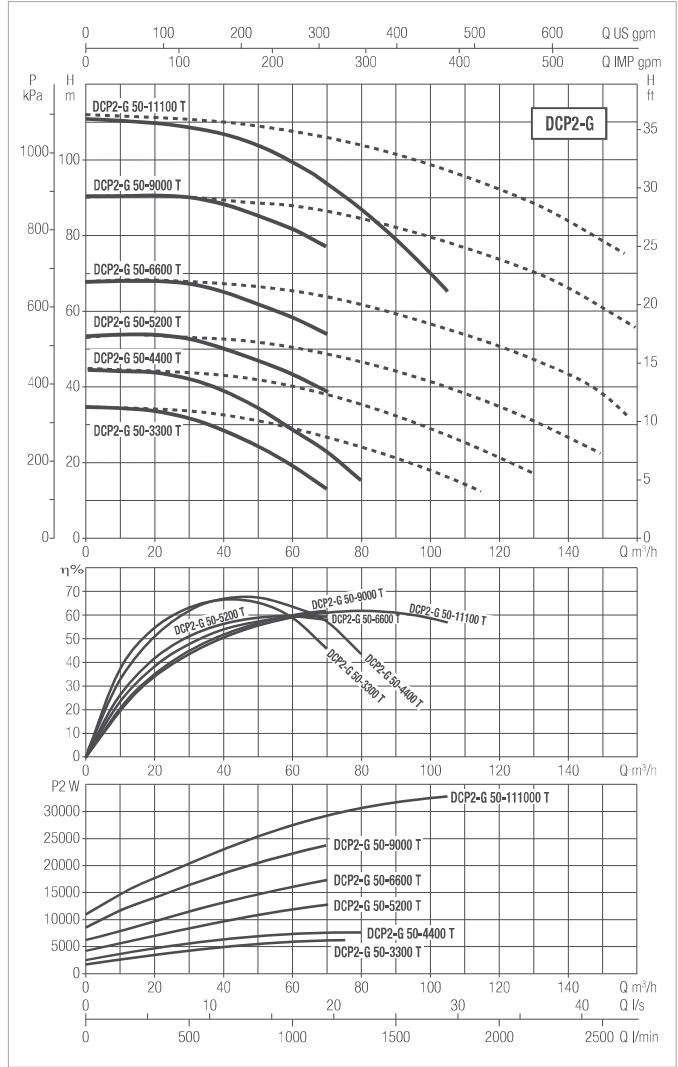
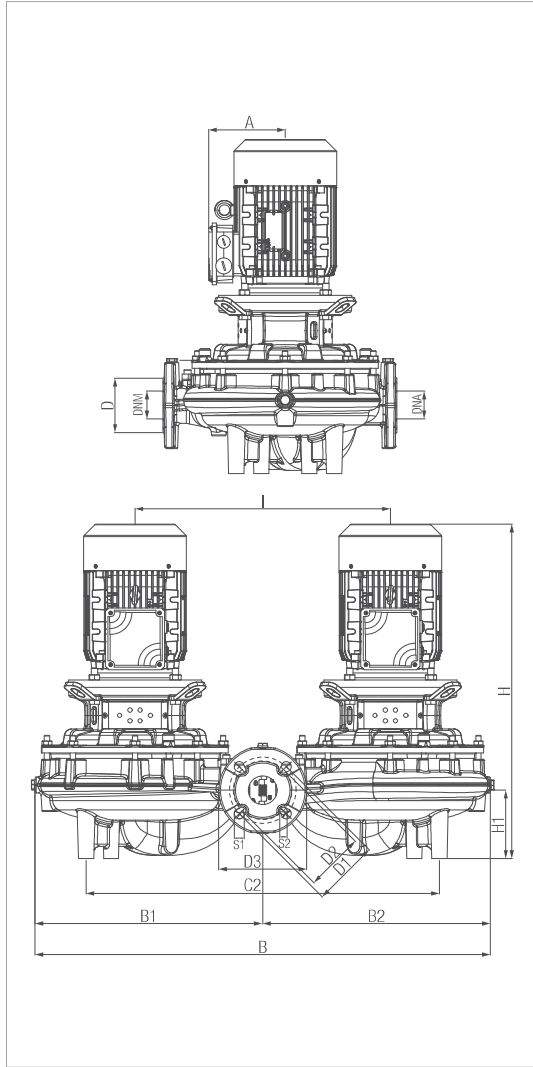
MODEL	ELECTRICAL DATA							
	CENTRE DISTANCE	PUMP CONNECTIONS	POWER INPUT 50 HZ	P1 MAX [kW]	P2 NOMINAL		In [A]	
					kW	HP	230	400
DCP2 50-600 T	280	DN 50 PN 16 DN 50 PN 10	230-400V	0,52	0,55	0,75	2,1	1,2
DCP2 50-800 T				0,79	0,55	0,75	2,6	1,5
DCP2 50-1100 T				1,29	0,8	1,07	3,8	2,2
DCP2 50-1400 T				1,95	1,5	2	6,6	3,8
DCP2 50-1800 T				2,6	2,2	3	8,3	4,8
DCP2 50-2100 T				3,6	3	4	11,3	6,5
DCP2 50-2800 T	340			4,5	7,5	10	14	8,1

MODEL	A	B	B1	B2	C1	C2	D	D1	S1	D2	S2	D3	DNA	DNM	H	H1	I	L	L1	L2	M	PACKING DIMENSIONS			VOLUME (mc)	WEIGHT Kg
																						L/A	L/B	H		
																						DCP2 50-600 T	110	530		
DCP2 50-800 T	110	530	261	270	92	392	90	125	23,3	110	18	165	50	50	415	73	300	280	133	147	10	0,72	0,6	0,58	0,25	58,2
DCP2 50-1100 T	110	530	261	270	92	392	90	125	23,3	110	18	165	50	50	415	73	300	280	133	147	10	0,72	0,6	0,58	0,25	58,2
DCP2 50-1400 T	118	530	261	270	92	392	90	125	23,3	110	18	165	50	50	497	73	300	280	133	147	10	0,72	0,6	0,58	0,25	75,6
DCP2 50-1800 T	118	530	261	270	92	392	90	125	23,3	110	18	165	50	50	497	73	300	280	133	147	10	0,72	0,6	0,58	0,25	75,6
DCP2 50-2100 T	134,5	530	261	270	92	392	90	125	23,3	110	18	165	50	50	486,5	73	300	280	133	147	10	0,72	0,6	0,58	0,25	94,2
DCP2 50-2800 T	134,5	631	313	319	113	463	100	125	21,8	110	14	165	50	50	560	105	350	340	190	150	10	0,72	0,6	0,58	0,25	107

# DCP2-G - IN-LINE PUMPS

Liquid temperature range: from -15°C to +140°C - Maximum operating pressure: 16 bar (1600 kPa)

IN-LINE PUMPS



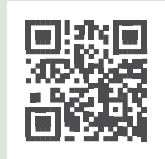
The performance curves are based on kinematic viscosity values = 1 mm<sup>2</sup>/s and density equal to 1000 kg/m<sup>3</sup>. Curve tolerance according to ISO 9906.

MODEL	ELECTRICAL DATA							
	CENTRE DISTANCE	PUMP CONNECTIONS	POWER INPUT 50 HZ	P1 MAX [kW]	P2 NOMINAL		In [A]	
					kW	HP	230	400
DCP2-G 50-3300 T	340	DN 50 PN 16 DN 50 PN 10	400-690V	5.9	5.5	7.5	9.9	5.7
DCP2-G 50-4400 T				8.2	7.5	11	13.9	8.11
DCP2-G 50-5200 T	440			16.3	11	15	26.2	15.1
DCP2-G 50-6600 T				23	15	20	36.8	21.2
DCP2-G 50-9000 T				32.3	22	30	52.8	30.5
DCP2-G 50-11100 T				36.3	30	40	61.1	35.3

MODEL	A	B	B1	B2	C1	C2	D	D1	S1	D2	S2	D3	DNA	DNM	H	H1	I	L	L1	L2	M	PACKING DIMENSIONS			VOLUME (mc)	WEIGHT Kg
																						L/A	L/B	H		
DCP2-G 50-3300 T	202	631	313	319	113	463	100	125	21,8	110	14	165	50	50	721,5	105	350	340	190	150	10	0,65	0,35	0,71	0,16	195,8
DCP2-G 50-4400 T	202	631	313	319	113	463	100	125	21,8	110	14	165	50	50	721,5	105	350	340	190	150	10	0,65	0,35	0,71	0,16	195,8
DCP2-G 50-5200 T	194,5	869	435	435	184	664	100	125	21,8	110	14	165	50	866	128,4	480	440	230	210	10	0,87	0,44	0,87	0,33	308	
DCP2-G 50-6600 T	194,5	869	435	435	184	664	100	125	21,8	110	14	165	50	866	128,4	480	440	230	210	10	0,87	0,44	0,87	0,33	308	
DCP2-G 50-9000 T	261	869	435	435	184	664	100	125	21,8	110	14	165	50	967	128,4	480	440	230	210	10	0,87	0,47	0,97	0,40	556,4	
DCP2-G 50-11100 T	296	869	435	435	184	664	100	125	21,8	110	14	165	50	1027	128,4	480	440	230	210	10	0,88	0,51	1,03	0,46	612,8	



On-line product selection



**DAB PUMPS LTD.**  
Unit 6 Gilbert Court  
Newcomen Way, Severalls Park  
CO4 9WN  
Colchester  
ordersuk@dwtgroup.com  
Tel. +44 0333 777 5010



**DAB PUMPS IBERICA S.L.**  
Calle Verano 18-20-22  
28850 - Torrejón de Ardoz - Madrid  
Spain  
Info.spain@dwtgroup.com  
Tel. +34 91 6569545



**DAB PUMPS (QINGDAO) CO. LTD.**  
No.10 Xindong Road  
Jiulong Town,  
Jiaozhou City  
266319 Qingdao (Shandong) - China  
sales.cn@dwtgroup.com  
Tel. +86 400 186 8280  
Fax +86 53286812210



**DAB PUMPS BV**  
'tHofveld 6 C1  
1702 Groot Bijgaarden - Belgium  
info.belgium@dwtgroup.com  
Tel. +32 2 4668353



**DAB PUMPS HUNGARY KFT.**  
H-8800  
Nagykanizsa, Buda Ernő u.5  
Hungary  
Tel. +36 93501700



**DAB PUMPS DE MÉXICO, S.A. DE C.V.**  
Av Amsterdam 101 Local 4  
Col. Hipódromo Condesa,  
Del. Cuauhtémoc CP 06170  
Ciudad de México  
Tel. +52 55 6719 0493



**DAB PUMPS B.V.**  
Statenlaan, 4  
5223 LA, 's-Hertogenbosch  
Nederland  
info.nl@dabpumps.com  
Tel. +31 416 387280



**DAB PUMPS POLAND Sp. z o.o.**  
Ul. Janka Muzykanta 60  
02188 Warszawa - Poland  
sprzedaz@dabpumps.com.pl



**DAB PUMPS OCEANIA PTY LTD**  
426 South Gippsland Highway,  
Dandenong South VIC 3175 - Australia  
info.oceania@dwtgroup.com  
Tel. +61 1300 378 677



**DAB PUMPS INC.**  
3226 Benchmark Drive  
Ladson, SC 29456 - USA  
info.usa@dwtgroup.com  
Tel. 1- 843-797-5002  
Fax 1-843-797-3366



**DAB PUMPS GMBH**  
Am Nordpark 3  
D - 41069 Mönchengladbach - Germany  
info.germany@dwtgroup.com  
Tel. +49 2161 47388-0  
Fax +49 2161 47388-36



**DAB PUMPS SOUTH AFRICA (PTY) LTD**  
Twenty One industrial Estate,  
16 Purlin Street, Unit B, Warehouse 4  
Olifantsfontein -1667 - South Africa  
info.sa@dwtgroup.com  
Tel. +27 12 361 3997



**PT DAB PUMPS INDONESIA**  
Satrio Tower lantai 26  
unit C-D, Jl. Prof. Dr. Satrio Kav. C4,  
Kel. Kuningan Timur, Kec. Setiabudi, Kota Adm.  
Jakarta Selatan, Prov. DKI Jakarta. - Indonesia  
Tel. +62 2129222850